

For Research Use Only

CTRB1 Polyclonal antibody

Catalog Number: 24939-1-AP

1 Publications



Basic Information

Catalog Number:

24939-1-AP

Size:

150ul, Concentration: 400 ug/ml by Nanodrop and 267 ug/ml by Bradford method using BSA as the standard;

Source:

Rabbit

Isotype:

IgG

Immunogen Catalog Number:

AG8604

GenBank Accession Number:

BC005385

GeneID (NCBI):

1504

Full Name:

chymotrypsinogen B1

Calculated MW:

263 aa, 28 kDa

Observed MW:

28 kDa

Purification Method:

Antigen affinity purification

Recommended Dilutions:

WB 1:500-1:2000

IHC 1:50-1:500

Applications

Tested Applications:

WB, IHC, ELISA

Cited Applications:

WB, IF

Species Specificity:

human, rat, mouse

Cited Species:

mouse

Note-IHC: suggested antigen retrieval with TE buffer pH 9.0; (*) Alternatively, antigen retrieval may be performed with citrate buffer pH 6.0

Positive Controls:

WB : mouse pancreas tissue, rat pancreas tissue

IHC : human pancreas tissue,

Notable Publications

Author	Pubmed ID	Journal	Application
Timothy L Hostelley	34125181	Biol Open	WB IF

Storage

Storage:

Store at -20°C. Stable for one year after shipment.

Storage Buffer:

PBS with 0.02% sodium azide and 50% glycerol pH 7.3.

Aliquoting is unnecessary for -20°C storage

*** 20ul sizes contain 0.1% BSA

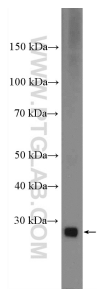
For technical support and original validation data for this product please contact:

T: 1 (888) 4PTGLAB (1-888-478-4522) (toll free in USA), or 1(312) 455-8498 (outside USA)

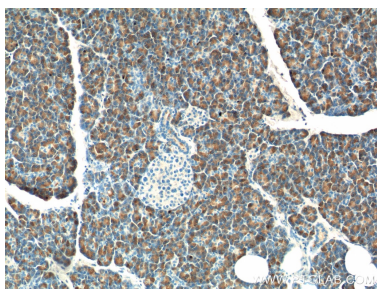
E: proteintech@ptglab.com
W: ptglab.com

This product is exclusively available under Proteintech Group brand and is not available to purchase from any other manufacturer.

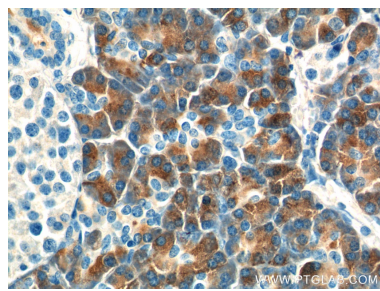
Selected Validation Data



mouse pancreas tissue were subjected to SDS PAGE followed by western blot with 24939-1-AP (CTRB1 Antibody) at dilution of 1:1000 incubated at room temperature for 1.5 hours.



Immunohistochemical analysis of paraffin-embedded human pancreas tissue slide using 24939-1-AP (CTRB1 Antibody) at dilution of 1:200 (under 10x lens).



Immunohistochemical analysis of paraffin-embedded human pancreas tissue slide using 24939-1-AP (CTRB1 Antibody) at dilution of 1:200 (under 40x lens).