

For Research Use Only

SCCPDH Polyclonal antibody

Catalog Number: 24941-1-AP



Basic Information

Catalog Number:

24941-1-AP

Size:

150ul , Concentration: 650 ug/ml by Nanodrop and 347 ug/ml by Bradford method using BSA as the standard;

Source:

Rabbit

Isotype:

IgG

Immunogen Catalog Number:

AG11551

GenBank Accession Number:

BC026185

GeneID (NCBI):

51097

UNIPROT ID:

Q8NBX0

Full Name:

saccharopine dehydrogenase (putative)

Calculated MW:

429 aa, 47 kDa

Observed MW:

40-47 kDa

Purification Method:

Antigen affinity purification

Recommended Dilutions:

WB 1:500-1:2000

IP 0.5-4.0 ug for 1.0-3.0 mg of total protein lysate

IF/ICC 1:50-1:500

Applications

Tested Applications:

WB, IF/ICC, IP, ELISA

Species Specificity:

human, mouse

Positive Controls:

WB : COLO 320 cells, HepG2 cells

IP : COLO 320 cells,

IF/ICC : HepG2 cells,

Storage

Storage:

Store at -20°C. Stable for one year after shipment.

Storage Buffer:

PBS with 0.02% sodium azide and 50% glycerol pH 7.3.

Aliquoting is unnecessary for -20°C storage

*** 20ul sizes contain 0.1% BSA

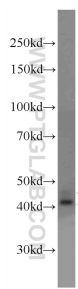
For technical support and original validation data for this product please contact:

T: 1 (888) 4PTGLAB (1-888-478-4522) (toll free in USA), or 1(312) 455-8498 (outside USA)

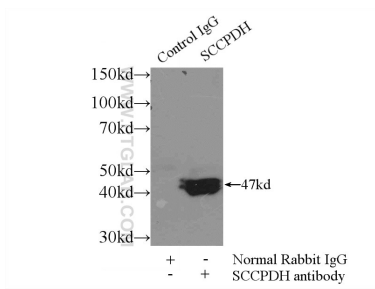
E: proteintech@ptglab.com
W: ptglab.com

This product is exclusively available under Proteintech Group brand and is not available to purchase from any other manufacturer.

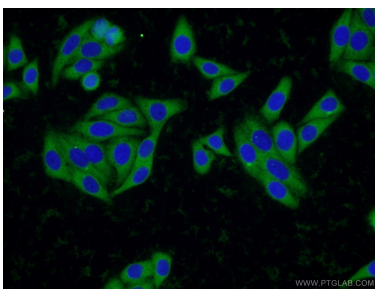
Selected Validation Data



COLO 320 cells were subjected to SDS PAGE followed by western blot with 24941-1-AP (SCCPDH Antibody) at dilution of 1:1000 incubated at room temperature for 1.5 hours.



IP result of anti-SCCPDH (IP:24941-1-AP, 3ug; Detection:24941-1-AP 1:300) with COLO 320 cells lysate 1700ug.



Immunofluorescent analysis of HepG2 cells using 24941-1-AP (SCCPDH antibody) at dilution of 1:50 and Alexa Fluor 488-conjugated Goat Anti-Rabbit IgG(H+L).