

For Research Use Only

# KDM4A Polyclonal antibody

Catalog Number: 24943-1-AP

Featured Product

2 Publications



## Basic Information

<b>Catalog Number:</b> 24943-1-AP	<b>GenBank Accession Number:</b> BC002558	<b>Purification Method:</b> Antigen affinity purification
<b>Size:</b> 150ul , Concentration: 450 µg/ml by Nanodrop and 253 µg/ml by Bradford method using BSA as the standard;	<b>GeneID (NCBI):</b> 9682	<b>Recommended Dilutions:</b> WB 1:200-1:1000
<b>Source:</b> Rabbit	<b>Full Name:</b> lysine (K)-specific demethylase 4A	
<b>Isotype:</b> IgG	<b>Calculated MW:</b> 1064 aa, 121 kDa	
<b>Immunogen Catalog Number:</b> AG20747	<b>Observed MW:</b> 55 kDa	

## Applications

<b>Tested Applications:</b> WB, ELISA	<b>Positive Controls:</b> WB : NIH/3T3 cells, MCF-7 cells
<b>Cited Applications:</b> ChIP, WB	
<b>Species Specificity:</b> human, mouse	
<b>Cited Species:</b> human, mouse	

## Background Information

KDM4A also named as JHDM3A, JMJD2, or KIAA0677 is a 1066 amino acid protein, which contains one JmjC domain, two Tudor domains and two PHD-type zinc fingers. KDM4A localizes in nucleus and belongs to the JHDM3 histone demethylase family. KDM4A is histone de-methylase that specifically demethylates Lys 9 and Lys 36 residues of Histone H3, thereby playing a central role in histone code. JMJD2A demethylation of lysine residues will generate formaldehyde and succinate. KDM4A also participates in transcriptional repression of ASCL2 and E2F-responsive promoters via the recruitment of histone deacetylases and NCOR1, respectively. JMJD2A is a ubiquitously expressed nuclear protein. KDM4A exists as two isoforms. The short isoform of KDM4A in which the N-terminal demethylase domains has been deleted. The molecular weight of short isoform is 55Da.

## Notable Publications

Author	Pubmed ID	Journal	Application
Tiantian Zhao	35197855	Front Pharmacol	WB
Ming Kong	31014673	Biochem Biophys Res Commun	WB,ChIP

## Storage

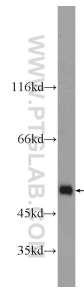
**Storage:**  
Store at -20°C. Stable for one year after shipment.  
**Storage Buffer:**  
PBS with 0.02% sodium azide and 50% glycerol pH 7.3.  
Aliquoting is unnecessary for -20°C storage

\*\*\* 20ul sizes contain 0.1% BSA

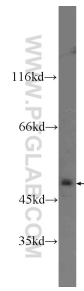
For technical support and original validation data for this product please contact:  
T: 1 (888) 4PTGLAB (1-888-478-4522) (toll free in USA), or 1(312) 455-8498 (outside USA)  
E: proteintech@ptglab.com  
W: ptglab.com

This product is exclusively available under Proteintech Group brand and is not available to purchase from any other manufacturer.

## Selected Validation Data



NIH/3T3 cells were subjected to SDS PAGE followed by western blot with 24943-1-AP (KDM4A Antibody) at dilution of 1:300 incubated at room temperature for 1.5 hours.



MCF-7 cells were subjected to SDS PAGE followed by western blot with 24943-1-AP (KDM4A Antibody) at dilution of 1:300 incubated at room temperature for 1.5 hours.