

For Research Use Only

# ME2 Polyclonal antibody

Catalog Number: 24944-1-AP

Featured Product

4 Publications



## Basic Information

### Catalog Number:

24944-1-AP

### Size:

150ul, Concentration: 1100 ug/ml by Nanodrop;

### Source:

Rabbit

### Isotype:

IgG

### Immunogen Catalog Number:

AG20741

### GenBank Accession Number:

BC000147

### GeneID (NCBI):

4200

### UNIPROT ID:

P23368

### Full Name:

malic enzyme 2, NAD(+)-dependent, mitochondrial

### Calculated MW:

65 kDa

### Observed MW:

54 kDa, 65 kDa

### Purification Method:

Antigen affinity purification

### Recommended Dilutions:

WB 1:2000-1:16000

IP 0.5-4.0 ug for 1.0-3.0 mg of total protein lysate

IHC 1:100-1:400

## Applications

### Tested Applications:

WB, IP, IHC, ELISA

### Cited Applications:

WB, IP

### Species Specificity:

human

### Cited Species:

human

**Note-IHC: suggested antigen retrieval with TE buffer pH 9.0; (\*) Alternatively, antigen retrieval may be performed with citrate buffer pH 6.0**

### Positive Controls:

WB: HL-60 cells, HeLa cells, Jurkat cells, K-562 cells

IP: HeLa cells,

IHC: human pancreas cancer tissue, human colon tissue

## Background Information

ME2(malic enzyme 2) is also named as NAD-ME and belongs to the malic enzymes family. ME1, ME2 are important for NADPH production, lipogenesis and glutamine metabolism, but ME2 has a more profound effect. ME2 is a genome-coded mitochondrial enzyme that converts malate to pyruvate and is involved in neuronal synthesis of the neurotransmitter  $\gamma$ -aminobutyric acid (GABA)(PMID:15532013). This protein has 2 isoforms produced by alternative splicing with the MW of 65 kDa and 54 kDa.

## Notable Publications

Author	Pubmed ID	Journal	Application
Linchong Sun	25793315	Cell Res	WB
Taiqi Chen	38263319	Nat Commun	WB,IP
Peng Teng	38007551	Cell Death Differ	WB

## Storage

### Storage:

Store at -20°C. Stable for one year after shipment.

### Storage Buffer:

PBS with 0.02% sodium azide and 50% glycerol pH 7.3.

Aliquoting is unnecessary for -20°C storage

\*\*\* 20ul sizes contain 0.1% BSA

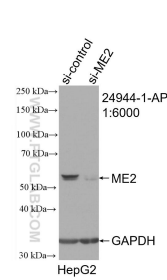
For technical support and original validation data for this product please contact:

T: 1 (888) 4PTGLAB (1-888-478-4522) (toll free in USA), or 1(312) 455-8498 (outside USA)

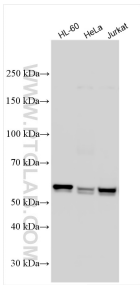
E: proteintech@ptglab.com  
W: ptglab.com

This product is exclusively available under Proteintech Group brand and is not available to purchase from any other manufacturer.

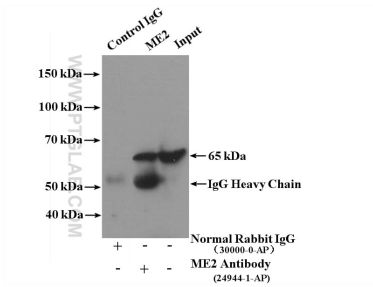
Selected Validation Data



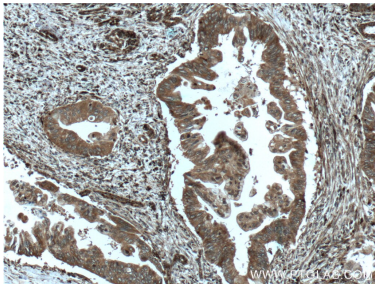
WB result of ME2 antibody (24944-1-AP; 1:6000; incubated at room temperature for 1.5 hours) with sh-Control and sh-ME2 transfected HepG2 cells.



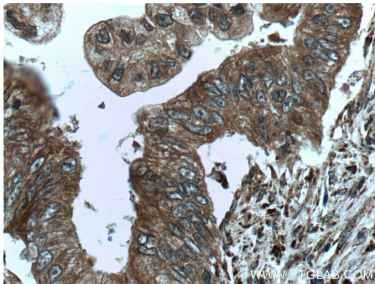
Various lysates were subjected to SDS PAGE followed by western blot with 24944-1-AP (ME2 antibody) at dilution of 1:8000 incubated at room temperature for 1.5 hours.



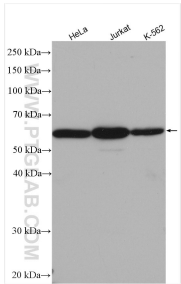
IP result of anti-ME2 (IP:24944-1-AP, 4ug; Detection:24944-1-AP 1:500) with HeLa cells lysate 3200ug.



Immunohistochemical analysis of paraffin-embedded human pancreas cancer tissue slide using 24944-1-AP (ME2 Antibody) at dilution of 1:200 (under 10x lens). Heat mediated antigen retrieval with Tris-EDTA buffer (pH 9.0).



Immunohistochemical analysis of paraffin-embedded human pancreas cancer tissue slide using 24944-1-AP (ME2 Antibody) at dilution of 1:200 (under 40x lens). Heat mediated antigen retrieval with Tris-EDTA buffer (pH 9.0).



Various lysates were subjected to SDS PAGE followed by western blot with 24944-1-AP (ME2 antibody) at dilution of 1:3000 incubated at room temperature for 1.5 hours.