

For Research Use Only

PRPF38A Polyclonal antibody

Catalog Number: 24946-1-AP



Basic Information

Catalog Number:

24946-1-AP

Size:

150ul , Concentration: 500 ug/ml by Nanodrop and 200 ug/ml by Bradford method using BSA as the standard;

Source:

Rabbit

Isotype:

IgG

Immunogen Catalog Number:

AG20980

GenBank Accession Number:

BC000777

GeneID (NCBI):

84950

UNIPROT ID:

Q8NAV1

Full Name:

PRP38 pre-mRNA processing factor 38 (yeast) domain containing A

Calculated MW:

312 aa, 37 kDa

Observed MW:

37-40 kDa

Purification Method:

Antigen affinity purification

Recommended Dilutions:

WB 1:200-1:1000

IF/ICC 1:20-1:200

Applications

Tested Applications:

WB, IF/ICC, ELISA

Species Specificity:

human

Positive Controls:

WB : K-562 cells, HepG2 cells

IF/ICC : HepG2 cells,

Background Information

PRPF38A was identified as an essential splicing factor in yeast and was found to be important for the progression of the splicing process to the first splicing step in this organism. PRPF38A is one of nine splicing factors that are specifically incorporated during the formation of the pre-catalytic spliceosomal B complex (B-specific proteins) and that are released again during spliceosome activation³ (PMID: 35869234). PRPF38A knockdown led to widespread intronic retention and altered splicing of transcripts of genes implicated in protein metabolism, mitosis, proteasome function and apoptosis (PMID: 28878028).

Storage

Storage:

Store at -20°C. Stable for one year after shipment.

Storage Buffer:

PBS with 0.02% sodium azide and 50% glycerol pH 7.3.

Aliquoting is unnecessary for -20°C storage

*** 20ul sizes contain 0.1% BSA

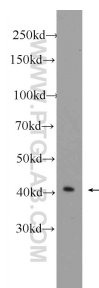
For technical support and original validation data for this product please contact:

T: 1 (888) 4PTGLAB (1-888-478-4522) (toll free in USA), or 1(312) 455-8498 (outside USA)

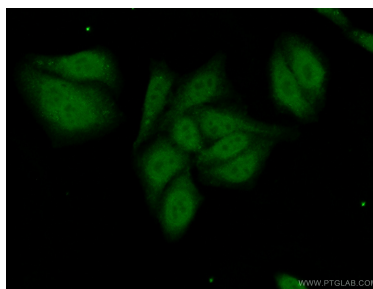
E: proteintech@ptglab.com
W: ptglab.com

This product is exclusively available under Proteintech Group brand and is not available to purchase from any other manufacturer.

Selected Validation Data



K-562 cells were subjected to SDS PAGE followed by western blot with 24946-1-AP (PRPF38A Antibody) at dilution of 1:300 incubated at room temperature for 1.5 hours.



Immunofluorescent analysis of (10% Formaldehyde) fixed HepG2 cells using 24946-1-AP (PRPF38A antibody) at dilution of 1:50 and Alexa Fluor 488-conjugated AffiniPure Goat Anti-Rabbit IgG(H+L).