

For Research Use Only

MCUR1 Polyclonal antibody

Catalog Number: 24948-1-AP **1 Publications**



Basic Information

Catalog Number:
24948-1-AP

Size:
150ul , Concentration: 167 µg/ml by Bradford method using BSA as the standard;

Source:
Rabbit

Isotype:
IgG

Immunogen Catalog Number:
AG20040

GenBank Accession Number:
BC016850

GeneID (NCBI):
63933

Full Name:
coiled-coil domain containing 90A

Calculated MW:
359 aa, 40 kDa

Observed MW:
40-50 kDa

Purification Method:
Antigen affinity purification

Recommended Dilutions:
WB 1:2000-1:12000
IP 0.5-4.0 ug for IP and 1:200-1:1000 for WB

Applications

Tested Applications:
IP, WB, ELISA

Cited Applications:
WB

Species Specificity:
human, mouse

Cited Species:
human

Positive Controls:

WB : HEK-293 cells, mouse brain tissue

IP : HEK-293 cells,

Background Information

Notable Publications

Author	Pubmed ID	Journal	Application
Venkateswaran Natarajan	33041854	Front Physiol	WB

Storage

Storage:

Store at -20°C. Stable for one year after shipment.

Storage Buffer:

PBS with 0.02% sodium azide and 50% glycerol pH 7.3.

Aliquoting is unnecessary for -20°C storage

***** 20ul sizes contain 0.1% BSA**

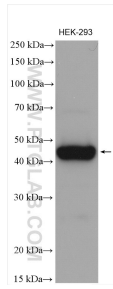
For technical support and original validation data for this product please contact:

T: 1 (888) 4PTGLAB (1-888-478-4522) (toll free in USA), or 1(312) 455-8498 (outside USA)

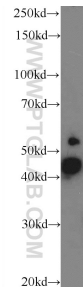
E: proteintech@ptglab.com
W: ptglab.com

This product is exclusively available under Proteintech Group brand and is not available to purchase from any other manufacturer.

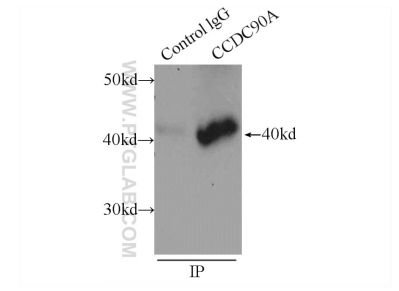
Selected Validation Data



HEK-293 cells were subjected to SDS PAGE followed by western blot with 24948-1-AP (MCUR1 antibody) at dilution of 1:6000 incubated at room temperature for 1.5 hours.



mouse brain tissue were subjected to SDS PAGE followed by western blot with 24948-1-AP (MCUR1 antibody) at dilution of 1:1000 incubated at 4 degree celsius over night.



IP Result of anti-MCUR1 (IP:24948-1-AP, 3ug; Detection:24948-1-AP 1:300) with HEK-293 cells lysate 920ug.