

For Research Use Only

C6orf182 Polyclonal antibody

Catalog Number: 24957-1-AP

Featured Product

3 Publications



Basic Information

Catalog Number:

24957-1-AP

Size:

150ul, Concentration: 650 ug/ml by Nanodrop and 307 ug/ml by Bradford method using BSA as the standard;

Source:

Rabbit

Isotype:

IgG

Immunogen Catalog Number:

AG21054

GenBank Accession Number:

BC064365

GeneID (NCBI):

285753

UNIPROT ID:

Q8IYX8

Full Name:

chromosome 6 open reading frame 182

Calculated MW:

460 aa, 54 kDa

Observed MW:

55-65 kDa

Purification Method:

Antigen affinity purification

Recommended Dilutions:

WB 1:500-1:1000

IF/ICC 1:50-1:500

Applications

Tested Applications:

WB, IF/ICC, ELISA

Cited Applications:

IF

Species Specificity:

human, mouse, monkey

Cited Species:

human

Positive Controls:

WB: A549 cells, mouse kidney tissue

IF/ICC: HeLa cells,

Background Information

C6orf182 also named as Centrosomal protein of 57 kDa related protein is a 460 amino-acid protein, which belongs to translokain family. C6orf182 as centrosomal protein may be required for microtubule attachment to centrosomes and localizes in the cytoplasm. The function of C6orf182 need to be further studied.

Notable Publications

Author	Pubmed ID	Journal	Application
Tianyu Wu	36395215	Science	IF
Kei K Ito	33492359	J Cell Biol	IF
Kei K Ito	39905228	EMBO J	IF

Storage

Storage:

Store at -20°C. Stable for one year after shipment.

Storage Buffer:

PBS with 0.02% sodium azide and 50% glycerol pH 7.3.

Aliquoting is unnecessary for -20°C storage

*** 20ul sizes contain 0.1% BSA

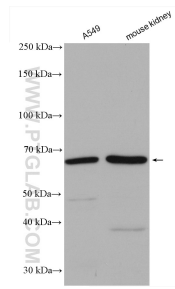
For technical support and original validation data for this product please contact:

T: 1 (888) 4PTGLAB (1-888-478-4522) (toll free in USA), or 1(312) 455-8498 (outside USA)

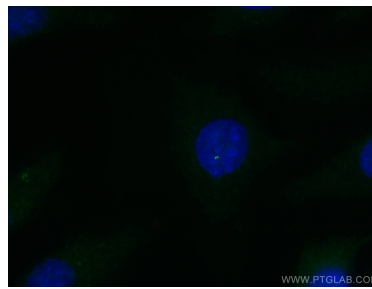
E: proteintech@ptglab.com
W: ptglab.com

This product is exclusively available under Proteintech Group brand and is not available to purchase from any other manufacturer.

Selected Validation Data



Various lysates were subjected to SDS PAGE followed by western blot with 24957-1-AP (C6orf182 antibody) at dilution of 1:600 incubated at room temperature for 1.5 hours.



Immunofluorescent analysis of (-20°C Methanol) fixed HeLa cells using C6orf182 antibody (24957-1-AP) at dilution of 1:200 and CoraLite® 488-Conjugated AffiniPure Goat Anti-Rabbit IgG(H+L).