

For Research Use Only

# BEND2 Polyclonal antibody

Catalog Number: 24958-1-AP



## Basic Information

<b>Catalog Number:</b> 24958-1-AP	<b>GenBank Accession Number:</b> BC096745	<b>Purification Method:</b> Antigen affinity purification
<b>Size:</b> 150ul , Concentration: 800 ug/ml by Nanodrop and 347 ug/ml by Bradford method using BSA as the standard;	<b>GeneID (NCBI):</b> 139105	<b>Recommended Dilutions:</b> WB: 1:500-1:1000
<b>Source:</b> Rabbit	<b>UNIPROT ID:</b> Q8NDZO	
<b>Isotype:</b> IgG	<b>Full Name:</b> BEN domain containing 2	
<b>Immunogen Catalog Number:</b> AG21152	<b>Calculated MW:</b> 799 aa, 88 kDa	
	<b>Observed MW:</b> 130-140 kDa	

## Applications

<b>Tested Applications:</b> WB, ELISA	<b>Positive Controls:</b> WB : mouse testis tissue, rat testis tissue
<b>Species Specificity:</b> human, mouse, rat	

## Background Information

BEND2 (BEN domain-containing protein 2) is a novel protein that is specifically expressed in spermatogenic cells around the time of meiotic initiation (PMID: 35613276). BEND2 interacted with a number of chromatin-associated proteins-including ZMYM2, LSD1, CHD4, and ADNP- which are components of certain transcription-repressor complexes. In the testis, Bend2 expresses two protein isoforms: the 130 kDa protein corresponds to the full-length BEND2, which displays a slower electrophoretic mobility due to its unusual sequence/structure. The 75 kDa protein corresponds to a smaller version of BEND2 lacking the N-terminus, p80.

## Storage

**Storage:**  
Store at -20°C. Stable for one year after shipment.  
**Storage Buffer:**  
PBS with 0.02% sodium azide and 50% glycerol, pH7.3  
Aliquoting is unnecessary for -20°C storage

\*\*\* 20ul sizes contain 0.1% BSA

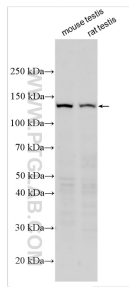
For technical support and original validation data for this product please contact:

T: 1 (888) 4PTGLAB (1-888-478-4522) (toll free in USA), or 1(312) 455-8498 (outside USA)

E: [proteintech@ptglab.com](mailto:proteintech@ptglab.com)  
W: [ptglab.com](http://ptglab.com)

This product is exclusively available under Proteintech Group brand and is not available to purchase from any other manufacturer.

## Selected Validation Data



Various lysates were subjected to SDS PAGE followed by western blot with 24958-1-AP (BEND2 antibody) at dilution of 1:500 incubated at room temperature for 1.5 hours.