

For Research Use Only

# C10orf28 Polyclonal antibody, PBS Only

Catalog Number: 24967-1-PBS



## Basic Information

Catalog Number:

24967-1-PBS

Size:

100ug, Concentration: 1 mg/ml by Nanodrop;

Source:

Rabbit

Isotype:

IgG

Immunogen Catalog Number:

AG21740

GenBank Accession Number:

BC098359

GeneID (NCBI):

27291

UNIPROT ID:

Q7Z5L2

Full Name:

chromosome 10 open reading frame 28

Calculated MW:

792 aa, 88 kDa

Observed MW:

110 kDa

Purification Method:

Antigen affinity purification

## Applications

Tested Applications:

WB, IHC, IF/ICC, Indirect ELISA

Species Specificity:

human

## Storage

Storage:

Store at -80°C.

Storage Buffer:

PBS Only

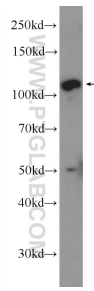
For technical support and original validation data for this product please contact:

T: 1 (888) 4PTGLAB (1-888-478-4522) (toll free in USA), or 1(312) 455-8498 (outside USA)

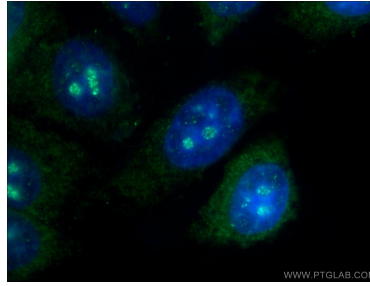
E: [proteintech@ptglab.com](mailto:proteintech@ptglab.com)  
W: [ptglab.com](http://ptglab.com)

This product is exclusively available under Proteintech Group brand and is not available to purchase from any other manufacturer.

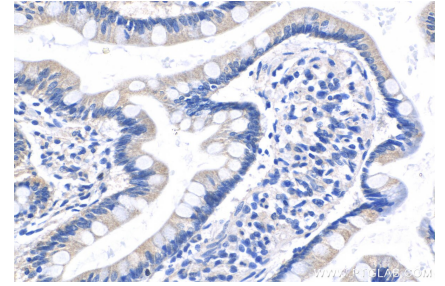
## Selected Validation Data



A549 cells were subjected to SDS PAGE followed by western blot with 24967-1-AP (C10orf28 Antibody) at dilution of 1:300 incubated at room temperature for 1.5 hours. This data was developed using the same antibody clone with 24967-1-PBS in a different storage buffer formulation.



Immunofluorescent analysis of HepG2 cells using 24967-1-AP (C10orf28 antibody) at dilution of 1:25 and Alexa Fluor 488-conjugated AffiniPure Goat Anti-Rabbit IgG(H+L). This data was developed using the same antibody clone with 24967-1-PBS in a different storage buffer formulation.



Immunohistochemical analysis of paraffin-embedded human small intestine tissue slide using 24967-1-AP (C10orf28 antibody) at dilution of 1:200 (under 40x lens). This data was developed using the same antibody clone with 24967-1-PBS in a different storage buffer formulation.