

For Research Use Only

NRDE2 Polyclonal antibody

Catalog Number: 24968-1-AP

Featured Product

5 Publications



Basic Information

Catalog Number:

24968-1-AP

Size:

150ul , Concentration: 650 ug/ml by Nanodrop and 353 ug/ml by Bradford method using BSA as the standard;

Source:

Rabbit

Isotype:

IgG

Immunogen Catalog Number:

AG21805

GenBank Accession Number:

BC118673

GeneID (NCBI):

55051

UNIPROT ID:

Q9H7Z3

Full Name:

chromosome 14 open reading frame 102

Calculated MW:

1164 aa, 133 kDa

Observed MW:

133 kDa

Purification Method:

Antigen affinity purification

Recommended Dilutions:

WB 1:500-1:1000

IP 0.5-4.0 ug for 1.0-3.0 mg of total protein lysate

Applications

Tested Applications:

WB, IP, ELISA

Cited Applications:

WB, IP, IHC, CoIP, ChIP

Species Specificity:

human

Cited Species:

human

Positive Controls:

WB : MCF-7 cells,

IP : MCF-7 cells,

Notable Publications

Author	Pubmed ID	Journal	Application
Jianshu Wang	30842217	Genes Dev	WB,IP
Koichi Ogami	28733371	Genes Dev	WB,CoIP,IP
Julio C Ruiz	32376621	J Virol	WB

Storage

Storage:

Store at -20°C. Stable for one year after shipment.

Storage Buffer:

PBS with 0.02% sodium azide and 50% glycerol pH 7.3.

Aliquoting is unnecessary for -20°C storage

*** 20ul sizes contain 0.1% BSA

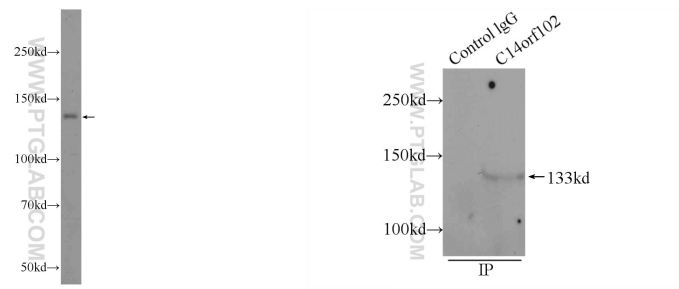
For technical support and original validation data for this product please contact:

T: 1 (888) 4PTGLAB (1-888-478-4522) (toll free in USA), or 1(312) 455-8498 (outside USA)

E: proteintech@ptglab.com
W: ptglab.com

This product is exclusively available under Proteintech Group brand and is not available to purchase from any other manufacturer.

Selected Validation Data



MCF-7 cells were subjected to SDS PAGE followed by western blot with 24968-1-AP (C14orf102 Antibody) at dilution of 1:600 incubated at room temperature for 1.5 hours.

IP result of anti-NRDE2 (IP:24968-1-AP, 5ug; Detection:24968-1-AP 1:500) with MCF-7 cells lysate 1200ug.