

For Research Use Only

# C18orf21 Polyclonal antibody

Catalog Number: 24977-1-AP



## Basic Information

### Catalog Number:

24977-1-AP

### Size:

150ul, Concentration: 500 ug/ml by Nanodrop and 333 ug/ml by Bradford method using BSA as the standard;

### Source:

Rabbit

### Isotype:

IgG

### Immunogen Catalog Number:

AG21782

### GenBank Accession Number:

BC119766

### GeneID (NCBI):

83608

### UNIPROT ID:

Q32NCO

### Full Name:

chromosome 18 open reading frame 21

### Calculated MW:

220 aa, 25 kDa

### Observed MW:

25-28 kDa

### Purification Method:

Antigen affinity purification

### Recommended Dilutions:

WB 1:500-1:1000

IHC 1:50-1:500

IF/ICC 1:20-1:200

## Applications

### Tested Applications:

WB, IHC, IF/ICC, ELISA

### Species Specificity:

human

**Note-IHC: suggested antigen retrieval with TE buffer pH 9.0; (\*) Alternatively, antigen retrieval may be performed with citrate buffer pH 6.0**

### Positive Controls:

WB: COLO 320 cells,

IHC: human urothelial carcinoma tissue, human colon cancer tissue, human pancreas tissue, human thyroid cancer tissue

IF/ICC: COLO 320 cells,

## Background Information

C18orf21, also named as XTP13, belongs to the UPF0711 family. The MW is 25-28 kDa in WB detection.

## Storage

### Storage:

Store at -20°C. Stable for one year after shipment.

### Storage Buffer:

PBS with 0.02% sodium azide and 50% glycerol pH 7.3.

Aliquoting is unnecessary for -20°C storage

\*\*\* 20ul sizes contain 0.1% BSA

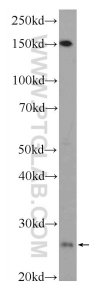
For technical support and original validation data for this product please contact:

T: 1 (888) 4PTGLAB (1-888-478-4522) (toll free in USA), or 1(312) 455-8498 (outside USA)

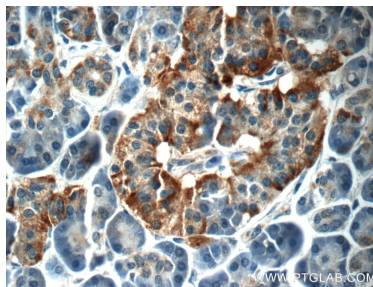
E: [proteintech@ptglab.com](mailto:proteintech@ptglab.com)  
W: [ptglab.com](http://ptglab.com)

This product is exclusively available under Proteintech Group brand and is not available to purchase from any other manufacturer.

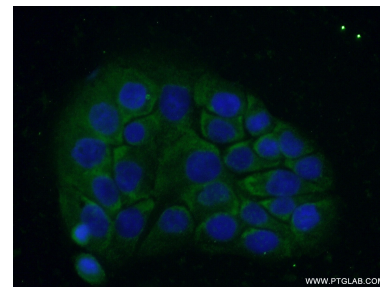
## Selected Validation Data



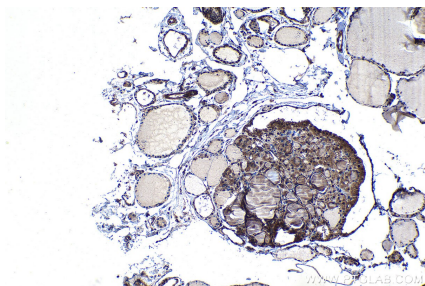
COLO 320 cells were subjected to SDS PAGE followed by western blot with 24977-1-AP (C18orf21 Antibody) at dilution of 1:600 incubated at room temperature for 1.5 hours.



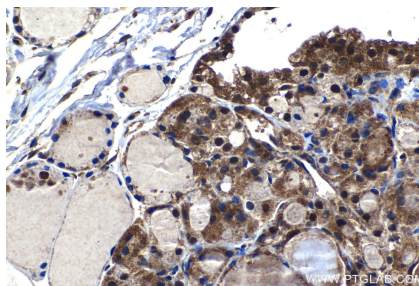
Immunohistochemical analysis of paraffin-embedded human pancreas tissue slide using 24977-1-AP (C18orf21 Antibody) at dilution of 1:50 (under 40x lens).



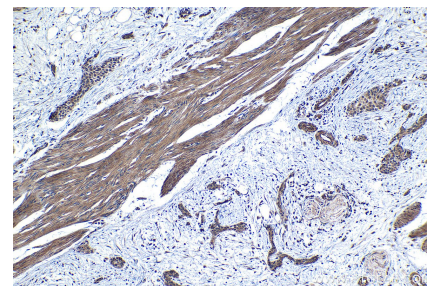
Immunofluorescent analysis of (-20°C Ethanol) fixed COLO 320 cells using 24977-1-AP (C18orf21 antibody) at dilution of 1:50 and Alexa Fluor 488-conjugated AffiniPure Goat Anti-Rabbit IgG(H+L).



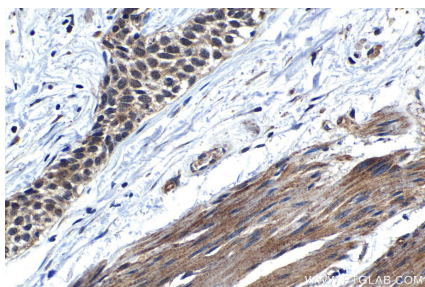
Immunohistochemical analysis of paraffin-embedded human thyroid cancer tissue slide using 24977-1-AP (C18orf21 antibody) at dilution of 1:200 (under 10x lens). Heat mediated antigen retrieval with Tris-EDTA buffer (pH 9.0).



Immunohistochemical analysis of paraffin-embedded human thyroid cancer tissue slide using 24977-1-AP (C18orf21 antibody) at dilution of 1:200 (under 40x lens). Heat mediated antigen retrieval with Tris-EDTA buffer (pH 9.0).



Immunohistochemical analysis of paraffin-embedded human urothelial carcinoma tissue slide using 24977-1-AP (C18orf21 antibody) at dilution of 1:200 (under 10x lens). Heat mediated antigen retrieval with Tris-EDTA buffer (pH 9.0).



Immunohistochemical analysis of paraffin-embedded human urothelial carcinoma tissue slide using 24977-1-AP (C18orf21 antibody) at dilution of 1:200 (under 40x lens). Heat mediated antigen retrieval with Tris-EDTA buffer (pH 9.0).