

For Research Use Only

# RNF219 Polyclonal antibody

Catalog Number: 24988-1-AP



## Basic Information

**Catalog Number:**  
24988-1-AP

**Size:**  
150ul , Concentration: 1000 µg/ml by Nanodrop and 480 µg/ml by Bradford method using BSA as the standard;

**Source:**  
Rabbit

**Isotype:**  
IgG

**Immunogen Catalog Number:**  
AG21767

**GenBank Accession Number:**  
BC136764

**GeneID (NCBI):**  
79596

**Full Name:**  
ring finger protein 219

**Calculated MW:**  
726 aa, 81 kDa

**Observed MW:**  
80-85 kDa

**Purification Method:**  
Antigen affinity purification

**Recommended Dilutions:**  
WB 1:200-1:1000  
IP 0.5-4.0 ug for IP and 1:200-1:1000 for WB  
IF 1:20-1:200

## Applications

**Tested Applications:**  
IF, IP, WB, ELISA

**Species Specificity:**  
human

**Positive Controls:**

**WB :** HEK-293T cells,

**IP :** A431 cells, HEK-293 cells

**IF :** HEK-293 cells,

## Background Information

### Storage

**Storage:**

Store at -20°C. Stable for one year after shipment.

**Storage Buffer:**

PBS with 0.02% sodium azide and 50% glycerol pH 7.3.

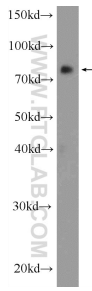
Aliquoting is unnecessary for -20°C storage

**\*\*\* 20ul sizes contain 0.1% BSA**

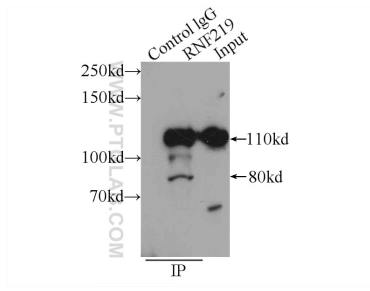
For technical support and original validation data for this product please contact:  
T: 1 (888) 4PTGLAB (1-888-478-4522) (toll free in USA), or 1(312) 455-8498 (outside USA)      E: proteintech@ptglab.com  
W: ptglab.com

**This product is exclusively available under Proteintech Group brand and is not available to purchase from any other manufacturer.**

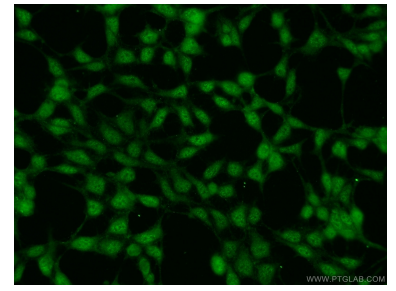
## Selected Validation Data



HEK-293T cells were subjected to SDS PAGE followed by western blot with 24988-1-AP (RNF219 Antibody) at dilution of 1:300 incubated at room temperature for 1.5 hours.



IP Result of anti-RNF219 (IP:24988-1-AP, 4ug; Detection:24988-1-AP 1:300) with A431 cells lysate 1200ug.



Immunofluorescent analysis of HEK-293 cells using 24988-1-AP (RNF219 antibody) at dilution of 1:50 and Alexa Fluor 488-conjugated AffiniPure Goat Anti-Rabbit IgG(H+L).