

For Research Use Only

hCG Alpha Polyclonal antibody

Catalog Number: 25014-1-AP

5 Publications



Basic Information

Catalog Number:

25014-1-AP

Size:

150ul, Concentration: 650 ug/ml by Nanodrop and 360 ug/ml by Bradford method using BSA as the standard;

Source:

Rabbit

Isotype:

IgG

Immunogen Catalog Number:

AG17313

GenBank Accession Number:

BC020782

GeneID (NCBI):

1081

UNIPROT ID:

P01215

Full Name:

glycoprotein hormones, alpha polypeptide

Calculated MW:

116 aa, 13 kDa

Observed MW:

22 kDa

Purification Method:

Antigen affinity purification

Recommended Dilutions:

WB 1:1000-1:4000

IHC 1:1000-1:4000

Applications

Tested Applications:

WB, IHC, ELISA

Cited Applications:

WB, IHC, IF

Species Specificity:

human

Cited Species:

human

Positive Controls:

WB: JAR cells, human placenta tissue

IHC: human placenta tissue,

Note-IHC: suggested antigen retrieval with TE buffer pH 9.0; (*) Alternatively, antigen retrieval may be performed with citrate buffer pH 6.0

Notable Publications

| Author | Pubmed ID | Journal | Application |
|---------------|-----------|-------------------------|-------------|
| Zhenghao Wu | 35101946 | J Immunother Cancer | WB,IF |
| Hua Huang | 35521536 | iScience | WB |
| Xiaochun Teng | 25867808 | J Clin Endocrinol Metab | IHC |

Storage

Storage:

Store at -20°C. Stable for one year after shipment.

Storage Buffer:

PBS with 0.02% sodium azide and 50% glycerol pH 7.3.

Aliquoting is unnecessary for -20°C storage

*** 20ul sizes contain 0.1% BSA

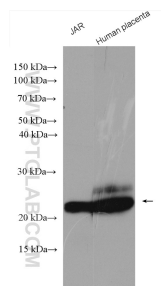
For technical support and original validation data for this product please contact:

T: 1 (888) 4PTGLAB (1-888-478-4522) (toll free in USA), or 1(312) 455-8498 (outside USA)

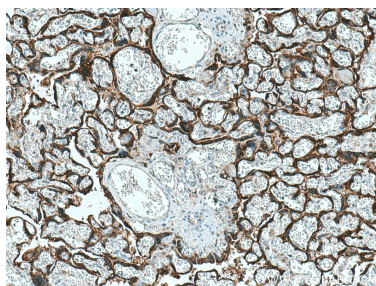
E: proteintech@ptglab.com
W: ptglab.com

This product is exclusively available under Proteintech Group brand and is not available to purchase from any other manufacturer.

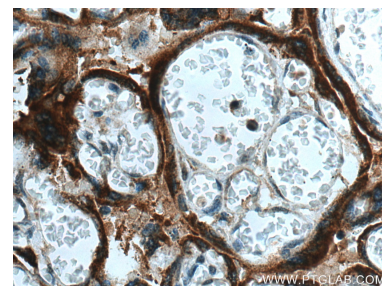
Selected Validation Data



Various lysates were subjected to SDS PAGE followed by western blot with 25014-1-AP (hCG alpha antibody) at dilution of 1:2000 incubated at room temperature for 1.5 hours.



Immunohistochemical analysis of paraffin-embedded human placenta tissue slide using 25014-1-AP (hCG Alpha antibody) at dilution of 1:2000 (under 10x lens). Heat mediated antigen retrieval with Tris-EDTA buffer (pH 9.0).



Immunohistochemical analysis of paraffin-embedded human placenta tissue slide using 25014-1-AP (hCG Alpha antibody) at dilution of 1:2000 (under 40x lens). Heat mediated antigen retrieval with Tris-EDTA buffer (pH 9.0).