

For Research Use Only

# LRCH1 Polyclonal antibody, PBS Only

Catalog Number:25017-1-PBS



## Basic Information

<b>Catalog Number:</b> 25017-1-PBS	<b>GenBank Accession Number:</b> BC112937	<b>Purification Method:</b> Antigen affinity purification
<b>Size:</b> 100ug , Concentration: 1 mg/ml by Nanodrop;	<b>GeneID (NCBI):</b> 23143	
<b>Source:</b> Rabbit	<b>UNIPROT ID:</b> Q9Y2L9	
<b>Isotype:</b> IgG	<b>Full Name:</b> leucine-rich repeats and calponin homology (CH) domain containing 1	
<b>Immunogen Catalog Number:</b> AG18728	<b>Calculated MW:</b> 728 aa, 80 kDa	
	<b>Observed MW:</b> 85-95 kDa	

## Applications

**Tested Applications:**  
WB, IHC, IF/ICC, IP, Indirect ELISA

**Species Specificity:**  
human, mouse

## Background Information

LRCH1, also named as CHDC1 or Neuronal protein 81, is a 728 amino acid protein, which contains one CH domain and nine LRR repeats. The molecular weight of LRCH1 is 81 kDa and it contains phosphorylation modified residues. we detected a 85-95 kDa protein by western blot. The function of LRCH1 is still non-known.

## Storage

**Storage:**  
Store at -80°C.

**Storage Buffer:**  
PBS Only

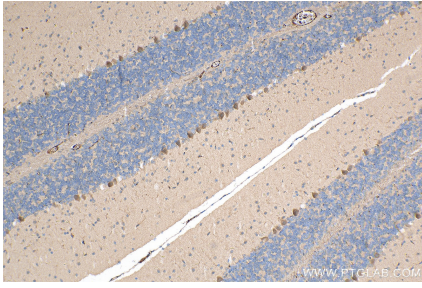
For technical support and original validation data for this product please contact:

T: 1 (888) 4PTGLAB (1-888-478-4522) (toll free in USA), or 1(312) 455-8498 (outside USA)

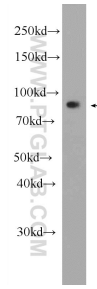
E: [proteintech@ptglab.com](mailto:proteintech@ptglab.com)  
W: [ptglab.com](http://ptglab.com)

**This product is exclusively available under Proteintech Group brand and is not available to purchase from any other manufacturer.**

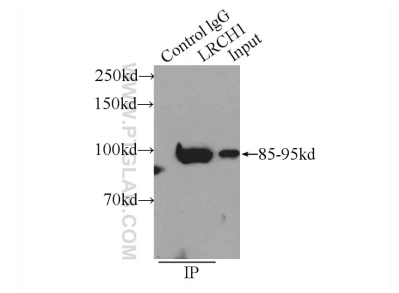
## Selected Validation Data



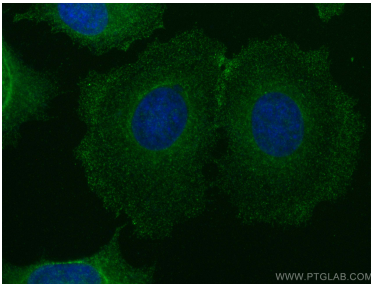
Immunohistochemical analysis of paraffin-embedded mouse cerebellum tissue slide using 25017-1-AP (LRCH1 antibody) at dilution of 1:200 (under 10x lens). Heat mediated antigen retrieval with Tris-EDTA buffer (pH 9.0). This data was developed using the same antibody clone with 25017-1-PBS in a different storage buffer formulation.



HeLa cells were subjected to SDS PAGE followed by western blot with 25017-1-AP (LRCH1 Antibody) at dilution of 1:1000 incubated at room temperature for 1.5 hours. This data was developed using the same antibody clone with 25017-1-PBS in a different storage buffer formulation.



IP result of anti-LRCH1 (IP:25017-1-AP, 4ug; Detection:25017-1-AP 1:300) with HeLa cells lysate 1600ug. This data was developed using the same antibody clone with 25017-1-PBS in a different storage buffer formulation.



Immunofluorescent analysis of (-20°C Methanol) fixed MCF-7 cells using LRCH1 antibody (25017-1-AP) at dilution of 1:200 and CoraLite®488-Conjugated AffiniPure Goat Anti-Rabbit IgG(H+L) (SA00013-2). This data was developed using the same antibody clone with 25017-1-PBS in a different storage buffer formulation.