

For Research Use Only

DEC1 Polyclonal antibody

Catalog Number: 25021-1-AP

1 Publications



Basic Information

Catalog Number:

25021-1-AP

Size:

150ul, Concentration: 550 ug/ml by Nanodrop and 333 ug/ml by Bradford method using BSA as the standard;

Source:

Rabbit

Isotype:

IgG

Immunogen Catalog Number:

AG20192

GenBank Accession Number:

BC153139

GeneID (NCBI):

50514

UNIPROT ID:

Q9P2X7

Full Name:

deleted in esophageal cancer 1

Calculated MW:

70 aa, 8 kDa

Purification Method:

Antigen affinity purification

Recommended Dilutions:

IHC 1:50-1:500

Applications

Tested Applications:

IHC, ELISA

Cited Applications:

WB

Species Specificity:

human

Cited Species:

rat

Note-IHC: suggested antigen retrieval with TE buffer pH 9.0; (*) Alternatively, antigen retrieval may be performed with citrate buffer pH 6.0

Positive Controls:

IHC : human prostate cancer tissue, human testis tissue

Background Information

DEC1 (Deleted in esophageal cancer 1), also named as CTS9 (Candidate tumor suppressor CTS9), is a tumor suppressor protein. It is expressed in many tissues, with highest expression in prostate and testis. This gene is different to another DEC1 protein (Differentially expressed in chondrocytes protein 1, BHLHE40).

Notable Publications

Author	Pubmed ID	Journal	Application
Annette Schröder	31984552	FASEB J	WB

Storage

Storage:

Store at -20°C. Stable for one year after shipment.

Storage Buffer:

PBS with 0.02% sodium azide and 50% glycerol pH 7.3.

Aliquoting is unnecessary for -20°C storage

*** 20ul sizes contain 0.1% BSA

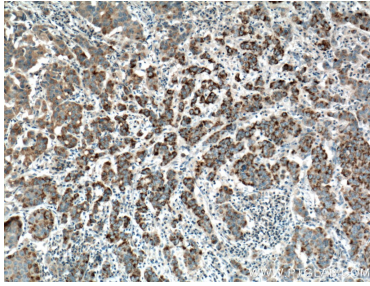
For technical support and original validation data for this product please contact:

T: 1 (888) 4PTGLAB (1-888-478-4522) (toll free in USA), or 1(312) 455-8498 (outside USA)

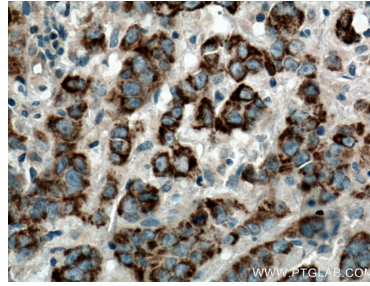
E: proteintech@ptglab.com
W: ptglab.com

This product is exclusively available under Proteintech Group brand and is not available to purchase from any other manufacturer.

Selected Validation Data



Immunohistochemical analysis of paraffin-embedded human prostate cancer tissue slide using 25021-1-AP (DEC1 Antibody) at dilution of 1:200 (under 10x lens). Heat mediated antigen retrieval with Tris-EDTA buffer (pH 9.0).



Immunohistochemical analysis of paraffin-embedded human prostate cancer tissue slide using 25021-1-AP (DEC1 Antibody) at dilution of 1:200 (under 40x lens). Heat mediated antigen retrieval with Tris-EDTA buffer (pH 9.0).