

For Research Use Only

GCP6 Polyclonal antibody

Catalog Number: 25022-1-AP



Basic Information

Catalog Number:

25022-1-AP

Size:

150ul , Concentration: 700 ug/ml by Nanodrop and 333 ug/ml by Bradford method using BSA as the standard;

Source:

Rabbit

Isotype:

IgG

Immunogen Catalog Number:

AG21634

GenBank Accession Number:

BC150613

GeneID (NCBI):

85378

UNIPROT ID:

Q96RT7

Full Name:

tubulin, gamma complex associated protein 6

Calculated MW:

1819 aa, 201 kDa

Observed MW:

200 kDa

Purification Method:

Antigen affinity purification

Recommended Dilutions:

WB 1:500-1:2000

Applications

Tested Applications:

WB, ELISA

Species Specificity:

human

Positive Controls:

WB : HEK-293 cells,

Storage

Storage:

Store at -20°C. Stable for one year after shipment.

Storage Buffer:

PBS with 0.02% sodium azide and 50% glycerol pH 7.3.

Aliquoting is unnecessary for -20°C storage

*** 20ul sizes contain 0.1% BSA

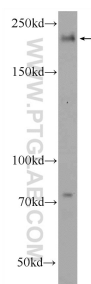
For technical support and original validation data for this product please contact:

T: 1 (888) 4PTGLAB (1-888-478-4522) (toll free in USA), or 1(312) 455-8498 (outside USA)

E: proteintech@ptglab.com
W: ptglab.com

This product is exclusively available under Proteintech Group brand and is not available to purchase from any other manufacturer.

Selected Validation Data



HEK-293 cells were subjected to SDS PAGE followed by western blot with 25022-1-AP (TUBGCP6 Antibody) at dilution of 1:1000 incubated at room temperature for 1.5 hours.