

For Research Use Only

NWD1 Polyclonal antibody

Catalog Number: 25025-1-AP

1 Publications



Basic Information

Catalog Number:

25025-1-AP

Size:

150ul, Concentration: 450 ug/ml by Nanodrop and 213 ug/ml by Bradford method using BSA as the standard;

Source:

Rabbit

Isotype:

IgG

Immunogen Catalog Number:

AG21754

GenBank Accession Number:

BC117698

GeneID (NCBI):

284434

UNIPROT ID:

Q149M9

Full Name:

NACHT and WD repeat domain containing 1

Calculated MW:

1564 aa, 175 kDa

Observed MW:

77 kDa

Purification Method:

Antigen affinity purification

Recommended Dilutions:

WB 1:500-1:1000

IF/ICC 1:20-1:200

Applications

Tested Applications:

WB, IF/ICC, ELISA

Cited Applications:

WB

Species Specificity:

human, mouse

Cited Species:

human

Positive Controls:

WB : SH-SY5Y cells, HepG2 cells, mouse brain tissue

IF/ICC : HepG2 cells,

Background Information

NWD1 also named as NWD1 Ens or NACHT and WD repeat domain containing 1 is a 1564 amino acid protein, which contains 1 NACHT domain and 13 WD repeat. The molecular weight of NWD1 was detected by western blot. The result shows that the molecular weight of NWD1 is 77 kDa., but NWD1 is a 174 kDa protein according to UniProt. The function of NWD1 is still non-known, meanwhile the molecular weight of NWD1 is still remained to be confirmed.

Notable Publications

Author	Pubmed ID	Journal	Application
Qin Yang	31474551	EBioMedicine	WB

Storage

Storage:

Store at -20°C. Stable for one year after shipment.

Storage Buffer:

PBS with 0.02% sodium azide and 50% glycerol pH 7.3.

Aliquoting is unnecessary for -20°C storage

*** 20ul sizes contain 0.1% BSA

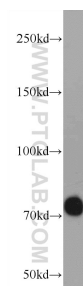
For technical support and original validation data for this product please contact:

T: 1 (888) 4PTGLAB (1-888-478-4522) (toll free in USA), or 1(312) 455-8498 (outside USA)

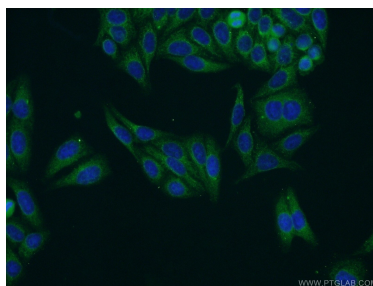
E: proteintech@ptglab.com
W: ptglab.com

This product is exclusively available under Proteintech Group brand and is not available to purchase from any other manufacturer.

Selected Validation Data



SH-SY5Y cells were subjected to SDS PAGE followed by western blot with 25025-1-AP (NWD1 Antibody) at dilution of 1:600 incubated at room temperature for 1.5 hours.



Immunofluorescent analysis of HepG2 cells using 25025-1-AP (NWD1 antibody) at dilution of 1:50 and Alexa Fluor 488-conjugated Goat Anti-Rabbit IgG(H+L).