

For Research Use Only

MSC Polyclonal antibody

Catalog Number: 25028-1-AP



Basic Information

Catalog Number: 25028-1-AP	GenBank Accession Number: BC006313	Purification Method: Antigen affinity purification
Size: 150ul , Concentration: 1000 ug/ml by Nanodrop and 353 ug/ml by Bradford method using BSA as the standard;	GeneID (NCBI): 9242	Recommended Dilutions: WB 1:200-1:1000 IHC 1:50-1:500
Source: Rabbit	UNIPROT ID: O60682	
Isotype: IgG	Full Name: musculin (activated B-cell factor-1)	
Immunogen Catalog Number: AG13489	Calculated MW: 22 kDa	
	Observed MW: 22 kDa	

Applications

Tested Applications: WB, IHC, ELISA	Positive Controls:
Species Specificity: human, mouse	WB : mouse spleen tissue, mouse thymus tissue
Note-IHC: suggested antigen retrieval with TE buffer pH 9.0; (*) Alternatively, antigen retrieval may be performed with citrate buffer pH 6.0	IHC : human lymphoma tissue,

Background Information

MSC, also named as Musculin, is a 206 amino acid protein, which contains 1 bHLH (basic helix-loop-helix) domain. MSC localizes in the nucleus and as a transcription repressor is capable of inhibiting the transactivation capability of TCF3/E47. MSC may play a role in regulating antigen-dependent B-cell differentiation.

Storage

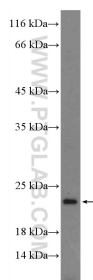
Storage:
Store at -20°C. Stable for one year after shipment.
Storage Buffer:
PBS with 0.02% sodium azide and 50% glycerol pH 7.3.
Aliquoting is unnecessary for -20°C storage

*** 20ul sizes contain 0.1% BSA

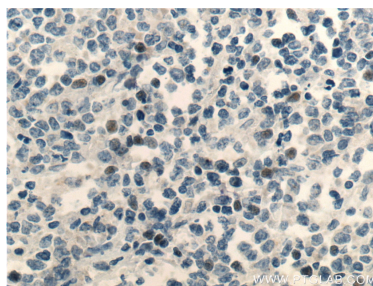
For technical support and original validation data for this product please contact:
T: 1 (888) 4PTGLAB (1-888-478-4522) (toll free in USA), or 1(312) 455-8498 (outside USA)
E: proteintech@ptglab.com
W: ptglab.com

This product is exclusively available under Proteintech Group brand and is not available to purchase from any other manufacturer.

Selected Validation Data



mouse spleen tissue were subjected to SDS PAGE followed by western blot with 25028-1-AP (MSC Antibody) at dilution of 1:100 incubated at room temperature for 1.5 hours.



Immunohistochemical analysis of paraffin-embedded human lymphoma tissue slide using 25028-1-AP (MSC Antibody) at dilution of 1:200 (under 40x lens). Heat mediated antigen retrieval with Tris-EDTA buffer (pH 9.0).