

For Research Use Only

ARMETL1 Polyclonal antibody

Catalog Number: 25035-1-AP



Basic Information

Catalog Number: 25035-1-AP	GenBank Accession Number: BC133042	Purification Method: Antigen affinity purification
Size: 150ul , Concentration: 600 µg/ml by Nanodrop and 380 µg/ml by Bradford method using BSA as the standard;	GeneID (NCBI): 441549	Recommended Dilutions: WB 1:200-1:1000 IHC 1:50-1:500
Source: Rabbit	Full Name: arginine-rich, mutated in early stage tumors-like 1	
Isotype: IgG	Calculated MW: 187 aa, 21 kDa	
Immunogen Catalog Number: AG18972	Observed MW: 21 kDa	

Applications

Tested Applications:

IHC, WB, ELISA

Species Specificity:

human, mouse

Note-IHC: suggested antigen retrieval with TE buffer pH 9.0; (*) Alternatively, antigen retrieval may be performed with citrate buffer pH 6.0

Positive Controls:

WB : mouse testis tissue,

IHC : human liver cancer tissue,

Background Information

Storage

Storage:

Store at -20°C. Stable for one year after shipment.

Storage Buffer:

PBS with 0.02% sodium azide and 50% glycerol pH 7.3.

Aliquoting is unnecessary for -20°C storage

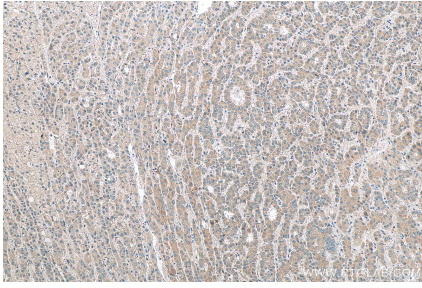
For technical support and original validation data for this product please contact:

T: 1 (888) 4PTGLAB (1-888-478-4522) (toll free in USA), or 1(312) 455-8498 (outside USA)

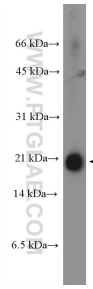
E: proteintech@ptglab.com
W: ptglab.com

This product is exclusively available under Proteintech Group brand and is not available to purchase from any other manufacturer.

Selected Validation Data



Immunohistochemical analysis of paraffin-embedded human liver cancer tissue slide using 25035-1-AP (ARMETL1 antibody) at dilution of 1:200 (under 10x lens). Heat mediated antigen retrieval with Tris-EDTA buffer (pH 9.0).



mouse testis tissue were subjected to SDS PAGE followed by western blot with 25035-1-AP (ARMETL1 Antibody) at dilution of 1:300 incubated at room temperature for 1.5 hours.