

For Research Use Only

CDNF Polyclonal antibody, PBS Only

Catalog Number:25035-1-PBS



Basic Information

Catalog Number:

25035-1-PBS

Size:

100ug , Concentration: 1 mg/ml by Nanodrop;

Source:

Rabbit

Isotype:

IgG

Immunogen Catalog Number:

AG18972

GenBank Accession Number:

BC133042

GeneID (NCBI):

441549

UNIPROT ID:

Q49AHO

Full Name:

arginine-rich, mutated in early stage tumors-like 1

Calculated MW:

187 aa, 21 kDa

Observed MW:

21 kDa

Purification Method:

Antigen affinity purification

Applications

Tested Applications:

WB, IHC, Indirect ELISA

Species Specificity:

human, mouse

Storage

Storage:

Store at -80°C.

Storage Buffer:

PBS only, pH7.3

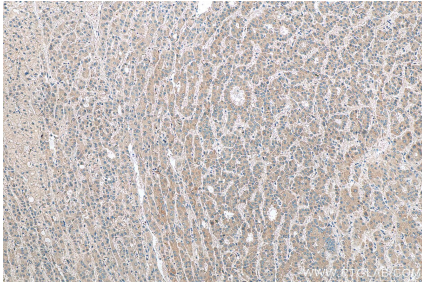
For technical support and original validation data for this product please contact:

T: 1 (888) 4PTGLAB (1-888-478-4522) (toll free in USA), or 1(312) 455-8498 (outside USA)

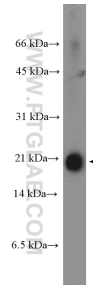
E: proteintech@ptglab.com
W: ptglab.com

This product is exclusively available under Proteintech Group brand and is not available to purchase from any other manufacturer.

Selected Validation Data



Immunohistochemical analysis of paraffin-embedded human liver cancer tissue slide using 25035-1-AP (ARMETL1 antibody) at dilution of 1:200 (under 10x lens). Heat mediated antigen retrieval with Tris-EDTA buffer (pH 9.0). This data was developed using the same antibody clone with 25035-1-PBS in a different storage buffer formulation.



mouse testis tissue were subjected to SDS PAGE followed by western blot with 25035-1-AP (ARMETL1 Antibody) at dilution of 1:300 incubated at room temperature for 1.5 hours. This data was developed using the same antibody clone with 25035-1-PBS in a different storage buffer formulation.