

For Research Use Only

NAS1/SLC13A1 Polyclonal antibody

Catalog Number: 25039-1-AP



Basic Information

Catalog Number:

25039-1-AP

Size:

150ul, Concentration: 550 ug/ml by Nanodrop and 273 ug/ml by Bradford method using BSA as the standard;

Source:

Rabbit

Isotype:

IgG

Immunogen Catalog Number:

AG19026

GenBank Accession Number:

BC148686

GeneID (NCBI):

6561

UNIPROT ID:

Q9BZW2

Full Name:

solute carrier family 13 (sodium/sulfate symporters), member 1

Calculated MW:

595 aa, 66 kDa

Observed MW:

66 kDa

Purification Method:

Antigen affinity purification

Recommended Dilutions:

WB 1:500-1:2000

IF-P 1:50-1:500

Applications

Tested Applications:

WB, IF-P, ELISA

Species Specificity:

human, mouse

Positive Controls:

WB : HEK-293 cells, mouse kidney tissue

IF-P : mouse kidney tissue,

Background Information

SLC13A1 also known as NAS1, is an apical membrane Na(+)-sulfate cotransporter involved in sulfate homeostasis in the kidney. SLC13A1 primarily participates in pH-independent, sodium-dependent cotransport of sulfate across renal proximal tubules and small intestinal epithelia(PMID: 38552027).

Storage

Storage:

Store at -20°C. Stable for one year after shipment.

Storage Buffer:

PBS with 0.02% sodium azide and 50% glycerol pH 7.3.

Aliquoting is unnecessary for -20°C storage

*** 20ul sizes contain 0.1% BSA

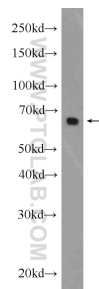
For technical support and original validation data for this product please contact:

T: 1 (888) 4PTGLAB (1-888-478-4522) (toll free in USA), or 1(312) 455-8498 (outside USA)

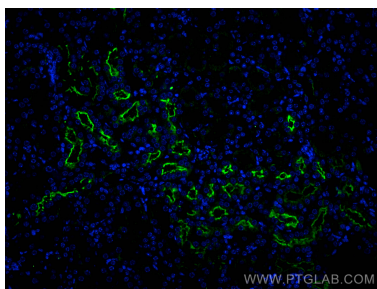
E: proteintech@ptglab.com
W: ptglab.com

This product is exclusively available under Proteintech Group brand and is not available to purchase from any other manufacturer.

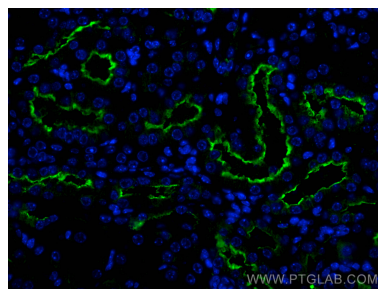
Selected Validation Data



HEK-293 cells were subjected to SDS PAGE followed by western blot with 25039-1-AP (NAS1/SLC13A1 antibody at dilution of 1:1000 incubated at room temperature for 1.5 hours.



Immunofluorescent analysis of (4% PFA) fixed paraffin-embedded mouse kidney tissue using NAS1/SLC13A1 antibody (25039-1-AP) at dilution of 1:200 and CoraLite®488-Conjugated Goat Anti-Rabbit IgG(H+L) (SA00013-2). Heat mediated antigen retrieval with Tris-EDTA buffer (pH 9.0).



Immunofluorescent analysis of (4% PFA) fixed paraffin-embedded mouse kidney tissue using NAS1/SLC13A1 antibody (25039-1-AP) at dilution of 1:200 and CoraLite®488-Conjugated Goat Anti-Rabbit IgG(H+L) (SA00013-2). Heat mediated antigen retrieval with Tris-EDTA buffer (pH 9.0).