

For Research Use Only

CAPZB Polyclonal antibody

Catalog Number: 25043-1-AP

Featured Product

7 Publications



Basic Information

Catalog Number:

25043-1-AP

Size:

150ul, Concentration: 600 ug/ml by Nanodrop;

Source:

Rabbit

Isotype:

IgG

Immunogen Catalog Number:

AG19327

GenBank Accession Number:

BC109241

GeneID (NCBI):

832

UNIPROT ID:

P47756

Full Name:

capping protein (actin filament)
muscle Z-line, beta

Calculated MW:

277 aa, 31 kDa

Observed MW:

30-31 kDa

Purification Method:

Antigen affinity purification

Recommended Dilutions:

WB 1:1000-1:4000

IHC 1:300-1:1200

IF/ICC 1:200-1:800

Applications

Tested Applications:

WB, IHC, IF/ICC, ELISA

Cited Applications:

WB, IHC, IP, ColP

Species Specificity:

human, mouse, rat

Cited Species:

human, mouse

Note-IHC: suggested antigen retrieval with TE buffer pH 9.0; (*) Alternatively, antigen retrieval may be performed with citrate buffer pH 6.0

Positive Controls:

WB : A431 cells, mouse testis tissue, HEK-293 cells, HeLa cells, Jurkat cells, NIH/3T3 cells, mouse heart tissue, rat heart tissue, mouse skeletal muscle tissue

IHC : human skin cancer tissue,

IF/ICC : A431 cells,

Notable Publications

Author	Pubmed ID	Journal	Application
Dawei Wang	34796874	Elife	WB,IP
Xiao-Zhen Zhang	35616329	Development	WB
Xiao-Zhen Zhang	35793634	Cell Rep	ColP

Storage

Storage:

Store at -20°C. Stable for one year after shipment.

Storage Buffer:

PBS with 0.02% sodium azide and 50% glycerol pH 7.3.

Aliquoting is unnecessary for -20°C storage

*** 20ul sizes contain 0.1% BSA

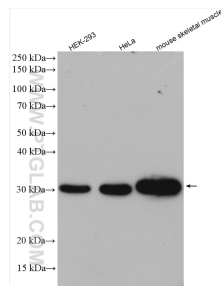
For technical support and original validation data for this product please contact:

T: 1 (888) 4PTGLAB (1-888-478-4522) (toll free in USA), or 1(312) 455-8498 (outside USA)

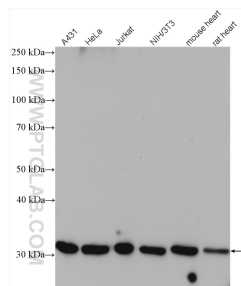
E: proteintech@ptglab.com
W: ptglab.com

This product is exclusively available under Proteintech Group brand and is not available to purchase from any other manufacturer.

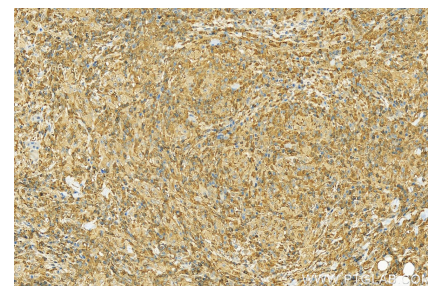
Selected Validation Data



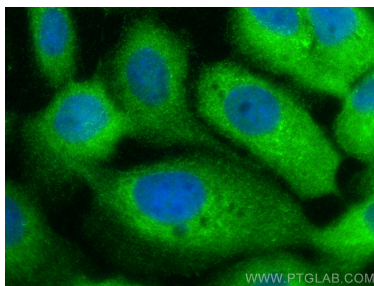
Various lysates were subjected to SDS PAGE followed by western blot with 25043-1-AP (CAPZB antibody) at dilution of 1:3000 incubated at room temperature for 1.5 hours.



Various lysates were subjected to SDS PAGE followed by western blot with 25043-1-AP (CAPZB antibody) at dilution of 1:3000 incubated at room temperature for 1.5 hours.



Immunohistochemical analysis of paraffin-embedded skin cancer slide using 25043-1-AP (CAPZB antibody) at dilution of 1:600 (under 20x lens). Heat mediated antigen retrieval with Tris-EDTA buffer (pH 9.0).



Immunofluorescent analysis of (-20°C Methanol) fixed A431 cells using CAPZB antibody (25043-1-AP) at dilution of 1:400 and CoraLite®488-Conjugated Goat Anti-Rabbit IgG(H+L) (SA00013-2).