

For Research Use Only

# IDO2 Polyclonal antibody

Catalog Number: 25053-1-AP **4 Publications**



## Basic Information

<b>Catalog Number:</b> 25053-1-AP	<b>GenBank Accession Number:</b> BC113496	<b>Purification Method:</b> Antigen affinity purification
<b>Size:</b> 150ul , Concentration: 500 µg/ml by Nanodrop and 353 µg/ml by Bradford method using BSA as the standard;	<b>GeneID (NCBI):</b> 169355	<b>Recommended Dilutions:</b> WB 1:500-1:1000 IHC 1:50-1:500 IF 1:20-1:200
<b>Source:</b> Rabbit	<b>Full Name:</b> indoleamine 2,3-dioxygenase 2	
<b>Isotype:</b> IgG	<b>Calculated MW:</b> 407 aa, 45 kDa	
<b>Immunogen Catalog Number:</b> AG21866	<b>Observed MW:</b> 45 kDa	

## Applications

<b>Tested Applications:</b> IF, IHC, WB, ELISA	<b>Positive Controls:</b> WB : A549 cells, IHC : human liver tissue, human lung tissue IF : A549 cells,
<b>Cited Applications:</b> IF, IHC, WB	
<b>Species Specificity:</b> human	
<b>Cited Species:</b> human, mouse	
<b>Note-IHC: suggested antigen retrieval with TE buffer pH 9.0; (*) Alternatively, antigen retrieval may be performed with citrate buffer pH 6.0</b>	

## Background Information

IDO2, also named as INDOL1, catalyzes the first and rate-limiting step in the kynurenine pathway of tryptophan catabolism. IDO2 gene has two isoforms with MW 45 kDa and 20 kDa.

## Notable Publications

Author	Pubmed ID	Journal	Application
Takako Yamamoto	31239324	Sci Signal	WB
Azubuikwe Peter Ebokaiwe	32822738	Toxicol Appl Pharmacol	WB
Sumei Zhang	38062922	Cancer Med	IHC

## Storage

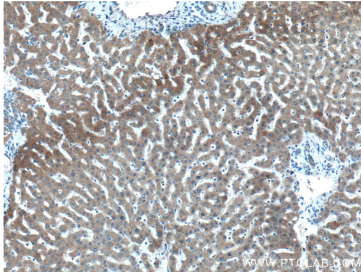
**Storage:**  
Store at -20°C. Stable for one year after shipment.  
**Storage Buffer:**  
PBS with 0.02% sodium azide and 50% glycerol pH 7.3.  
Aliquoting is unnecessary for -20°C storage

\*\*\* 20ul sizes contain 0.1% BSA

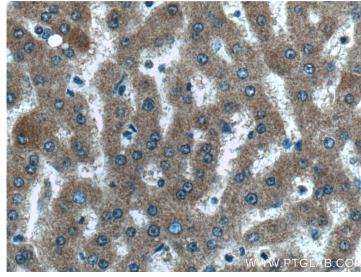
For technical support and original validation data for this product please contact:  
T: 1 (888) 4PTGLAB (1-888-478-4522) (toll free in USA), or 1(312) 455-8498 (outside USA)  
E: proteintech@ptglab.com  
W: ptglab.com

This product is exclusively available under Proteintech Group brand and is not available to purchase from any other manufacturer.

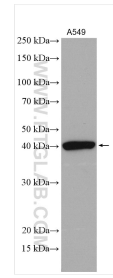
## Selected Validation Data



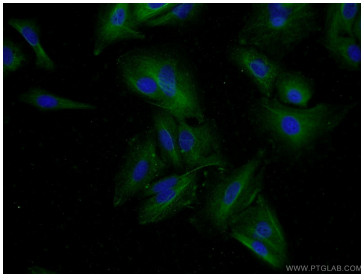
Immunohistochemical analysis of paraffin-embedded human liver tissue slide using 25053-1-AP (IDO2 antibody) at dilution of 1:200 (under 10x lens).



Immunohistochemical analysis of paraffin-embedded human liver tissue slide using 25053-1-AP (IDO2 antibody) at dilution of 1:200 (under 40x lens).



A549 cells were subjected to SDS PAGE followed by western blot with 25053-1-AP (IDO2 antibody) at dilution of 1:500 incubated at room temperature for 1.5 hours.



Immunofluorescent analysis of A549 cells using 25053-1-AP (IDO2 antibody) at dilution of 1:50 and Alexa Fluor 488-conjugated AffiniPure Goat Anti-Rabbit IgG(H+L).