

For Research Use Only

# CLIP-115/CLIP2 Polyclonal antibody



Catalog Number: 25088-1-AP

Featured Product

## Basic Information

<b>Catalog Number:</b> 25088-1-AP	<b>GenBank Accession Number:</b> BC150332	<b>Purification Method:</b> Antigen affinity purification
<b>Size:</b> 150ul , Concentration: 950 µg/ml by Nanodrop and 487 µg/ml by Bradford method using BSA as the standard;	<b>GeneID (NCBI):</b> 7461	<b>Recommended Dilutions:</b> WB 1:5000-1:50000 IP 0.5-4.0 ug for IP and 1:5000-1:50000 for WB
<b>Source:</b> Rabbit	<b>Full Name:</b> CAP-GLY domain containing linker protein 2	<b>IHC 1:400-1:1600</b>
<b>Isotype:</b> IgG	<b>Calculated MW:</b> 1011 aa, 112 kDa	
<b>Immunogen Catalog Number:</b> AG18692	<b>Observed MW:</b> 110-120 kDa	

## Applications

### Tested Applications:

IHC, IP, WB, ELISA

### Species Specificity:

human, mouse, rat

**Note-IHC: suggested antigen retrieval with TE buffer pH 9.0; (\*) Alternatively, antigen retrieval may be performed with citrate buffer pH 6.0**

### Positive Controls:

WB : RAW 264.7 cells, A549 cells, rat brain tissue, mouse brain tissue, mouse cerebellum tissue, rat cerebellum tissue

IP : mouse brain tissue,

IHC : mouse brain tissue,

## Background Information

CLIP-2/CLIP-115 is a cytoplasmic linker protein (CLIP) that links membranous organelles to microtubules. CLIP-115 is enriched in the axonal growth cone and it enables neuronal polarization by controlling the stabilization of microtubules. Mutation of CLIP-115 has been associated with Williams-Beuren syndrome.

## Storage

### Storage:

Store at -20°C. Stable for one year after shipment.

### Storage Buffer:

PBS with 0.02% sodium azide and 50% glycerol pH 7.3.

Aliquoting is unnecessary for -20°C storage

\*\*\* 20ul sizes contain 0.1% BSA

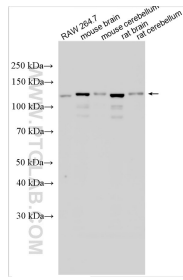
For technical support and original validation data for this product please contact:

T: 1 (888) 4PTGLAB (1-888-478-4522) (toll free in USA), or 1(312) 455-8498 (outside USA)

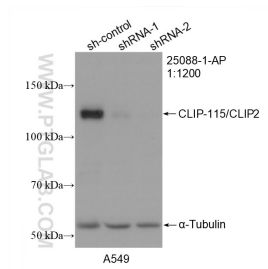
E: [proteintech@ptglab.com](mailto:proteintech@ptglab.com)  
W: [ptglab.com](http://ptglab.com)

This product is exclusively available under Proteintech Group brand and is not available to purchase from any other manufacturer.

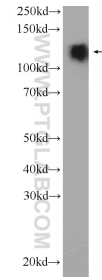
## Selected Validation Data



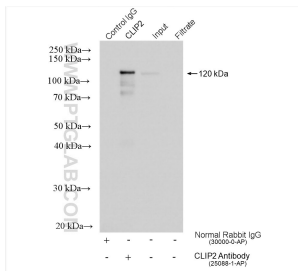
Various lysates were subjected to SDS PAGE followed by western blot with 25088-1-AP (CLIP-115/CLIP2 antibody) at dilution of 1:10000 incubated at room temperature for 1.5 hours.



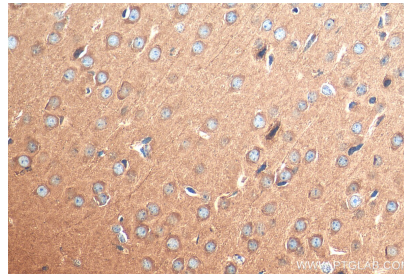
WB result of CLIP-115/CLIP2 antibody (25088-1-AP; 1:1200; incubated at room temperature for 1.5 hours) with sh-Control and sh-CLIP-115/CLIP2 transfected A549 cells.



mouse brain tissue were subjected to SDS PAGE followed by western blot with 25088-1-AP (CLIP-115/CYLN2 antibody) at dilution of 1:3000 incubated at room temperature for 1.5 hours.



IP result of anti-CLIP-115/CLIP2 (IP:25088-1-AP, 4ug; Detection:25088-1-AP 1:15000) with mouse brain tissue lysate 1080 ug.



Immunohistochemical analysis of paraffin-embedded mouse brain tissue slide using 25088-1-AP (CLIP-115/CLIP2 antibody) at dilution of 1:800 (under 40x lens). Heat mediated antigen retrieval with Tris-EDTA buffer (pH 9.0).