

For Research Use Only

PPM1E Polyclonal antibody

Catalog Number: 25089-1-AP



Basic Information

Catalog Number:

25089-1-AP

Size:

150ul , Concentration: 900 ug/ml by Nanodrop and 400 ug/ml by Bradford method using BSA as the standard;

Source:

Rabbit

Isotype:

IgG

Immunogen Catalog Number:

AG18751

GenBank Accession Number:

BC136290

GeneID (NCBI):

22843

UNIPROT ID:

Q8WY54

Full Name:

protein phosphatase 1E (PP2C domain containing)

Calculated MW:

764 aa, 85 kDa

Observed MW:

85 kDa

Purification Method:

Antigen affinity purification

Recommended Dilutions:

WB 1:5000-1:50000

IHC 1:50-1:500

IF/ICC 1:200-1:800

Applications

Tested Applications:

WB, IHC, IF/ICC, ELISA

Species Specificity:

human, mouse, rat

Note-IHC: suggested antigen retrieval with TE buffer pH 9.0; (*) Alternatively, antigen retrieval may be performed with citrate buffer pH 6.0

Positive Controls:

WB : human brain tissue, mouse brain tissue, rat brain tissue

IHC : rat brain tissue,

IF/ICC : SH-SY5Y cells, A431 cells

Background Information

Ca²⁺/calmodulin-dependent protein kinase phosphatase (CaMKP-N), also known as Ppm1E, is an AMPKα phosphatase, which is up-regulated in human gastric cancer tissues (PMID: 28423719).

Storage

Storage:

Store at -20°C. Stable for one year after shipment.

Storage Buffer:

PBS with 0.02% sodium azide and 50% glycerol pH 7.3.

Aliquoting is unnecessary for -20°C storage

*** 20ul sizes contain 0.1% BSA

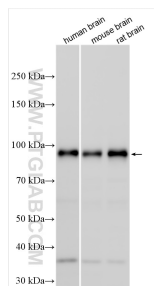
For technical support and original validation data for this product please contact:

T: 1 (888) 4PTGLAB (1-888-478-4522) (toll free in USA), or 1(312) 455-8498 (outside USA)

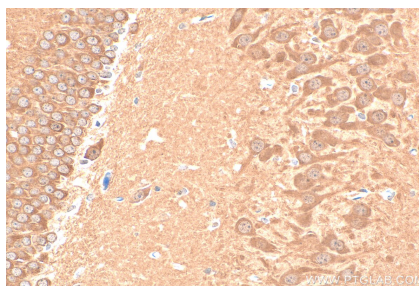
E: proteintech@ptglab.com
W: ptglab.com

This product is exclusively available under Proteintech Group brand and is not available to purchase from any other manufacturer.

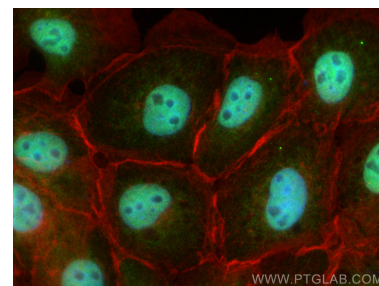
Selected Validation Data



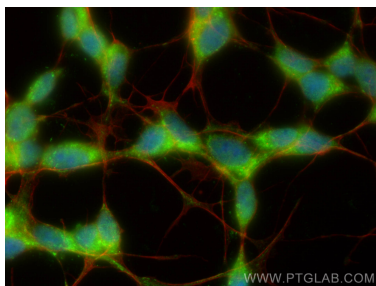
Various lysates were subjected to SDS PAGE followed by western blot with 25089-1-AP (PPM1E antibody) at dilution of 1:10000 incubated at room temperature for 1.5 hours.



Immunohistochemical analysis of paraffin-embedded rat brain tissue slide using 25089-1-AP (PPM1E antibody) at dilution of 1:200 (under 40x lens). Heat mediated antigen retrieval with Tris-EDTA buffer (pH 9.0).



Immunofluorescent analysis of (4% PFA) fixed A431 cells using PPM1E antibody (25089-1-AP) at dilution of 1:400 and CoraLite®488-Conjugated Goat Anti-Rabbit IgG(H+L), CL594-Phalloidin (red).



Immunofluorescent analysis of (-20°C Ethanol) fixed SH-SY5Y cells using PPM1E antibody (25089-1-AP) at dilution of 1:400 and CoraLite®488-Conjugated Goat Anti-Rabbit IgG(H+L), CL594-Phalloidin (red).