

For Research Use Only

# TMEM87A Polyclonal antibody

Catalog Number: 25091-1-AP



## Basic Information

**Catalog Number:**

25091-1-AP

**Size:**

150ul , Concentration: 450 ug/ml by Nanodrop and 233 ug/ml by Bradford method using BSA as the standard;

**Source:**

Rabbit

**Isotype:**

IgG

**Immunogen Catalog Number:**

AG18715

**GenBank Accession Number:**

BC005335

**GeneID (NCBI):**

25963

**UNIPROT ID:**

Q8NBN3

**Full Name:**

transmembrane protein 87A

**Calculated MW:**

555 aa, 63 kDa

**Observed MW:**

63-70 kDa

**Purification Method:**

Antigen affinity purification

**Recommended Dilutions:**

WB 1:200-1:1000

IHC 1:20-1:200

## Applications

**Tested Applications:**

WB, IHC, ELISA

**Species Specificity:**

human, mouse

**Note-IHC: suggested antigen retrieval with TE buffer pH 9.0; (\*) Alternatively, antigen retrieval may be performed with citrate buffer pH 6.0**

**Positive Controls:**

WB : RAW 264.7 cells, MDA-MB-453s cells, PC-3 cells

IHC : human breast cancer tissue, human prostate cancer tissue

## Storage

**Storage:**

Store at -20°C. Stable for one year after shipment.

**Storage Buffer:**

PBS with 0.02% sodium azide and 50% glycerol pH 7.3.

Aliquoting is unnecessary for -20°C storage

\*\*\* 20ul sizes contain 0.1% BSA

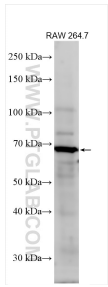
For technical support and original validation data for this product please contact:

T: 1 (888) 4PTGLAB (1-888-478-4522) (toll free in USA), or 1(312) 455-8498 (outside USA)

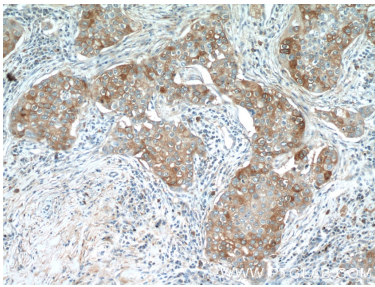
E: [proteintech@ptglab.com](mailto:proteintech@ptglab.com)  
W: [ptglab.com](http://ptglab.com)

This product is exclusively available under Proteintech Group brand and is not available to purchase from any other manufacturer.

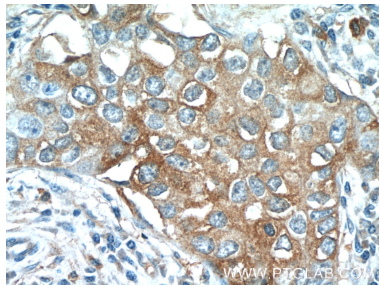
Selected Validation Data



RAW 264.7 cells were subjected to SDS PAGE followed by western blot with 25091-1-AP (TMEM87A antibody) at dilution of 1:300 incubated at room temperature for 1.5 hours.



Immunohistochemical analysis of paraffin-embedded human breast cancer tissue slide using 25091-1-AP (TMEM87A Antibody) at dilution of 1:50 (under 10x lens).



Immunohistochemical analysis of paraffin-embedded human breast cancer tissue slide using 25091-1-AP (TMEM87A Antibody) at dilution of 1:50 (under 40x lens).