

For Research Use Only

HIPK3 Polyclonal antibody

Catalog Number: 25107-1-AP **2 Publications**



Basic Information

Catalog Number: 25107-1-AP	GenBank Accession Number: BC156873	Purification Method: Antigen affinity purification
Size: 150ul , Concentration: 600 µg/ml by Nanodrop and 300 µg/ml by Bradford method using BSA as the standard;	GeneID (NCBI): 10114	Recommended Dilutions: WB 1:500-1:1000 IHC 1:50-1:500
Source: Rabbit	Full Name: homeodomain interacting protein kinase 3	
Isotype: IgG	Calculated MW: 1215 aa, 134 kDa	
Immunogen Catalog Number: AG18897	Observed MW: 150 kDa	

Applications

Tested Applications: IHC, WB, ELISA	Positive Controls: WB : mouse testis tissue, rat testis tissue IHC : human testis tissue,
Cited Applications: IHC, WB	
Species Specificity: human, mouse, rat	
Cited Species: human	
Note-IHC: suggested antigen retrieval with TE buffer pH 9.0; (*) Alternatively, antigen retrieval may be performed with citrate buffer pH 6.0	

Background Information

Notable Publications

Author	Pubmed ID	Journal	Application
Wen Xiao	33495417	Aging (Albany NY)	WB,IHC
Aye Myat Mon	38105269	Sci Rep	WB,IHC

Storage

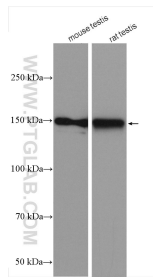
Storage:
Store at -20°C. Stable for one year after shipment.
Storage Buffer:
PBS with 0.02% sodium azide and 50% glycerol pH 7.3.
Aliquoting is unnecessary for -20°C storage

*** 20ul sizes contain 0.1% BSA

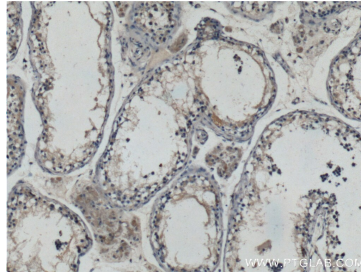
For technical support and original validation data for this product please contact:
T: 1 (888) 4PTGLAB (1-888-478-4522) (toll free in USA), or 1(312) 455-8498 (outside USA)
E: proteintech@ptglab.com
W: ptglab.com

This product is exclusively available under Proteintech Group brand and is not available to purchase from any other manufacturer.

Selected Validation Data



Various lysates were subjected to SDS PAGE followed by western blot with 25107-1-AP (HIPK3 antibody) at dilution of 1:600 incubated at room temperature for 1.5 hours.



Immunohistochemical analysis of paraffin-embedded human testis tissue slide using 25107-1-AP (HIPK3 Antibody) at dilution of 1:2000 (under 10x lens).