

For Research Use Only

BTNL2 Polyclonal antibody

Catalog Number: 25110-1-AP **1 Publications**



Basic Information

Catalog Number: 25110-1-AP	GenBank Accession Number: BC127642	Purification Method: Antigen affinity purification
Size: 150ul , Concentration: 350 µg/ml by Nanodrop and 213 µg/ml by Bradford method using BSA as the standard;	GeneID (NCBI): 56244	Recommended Dilutions: WB 1:1000-1:4000
Source: Rabbit	Full Name: butyrophilin-like 2 (MHC class II associated)	
Isotype: IgG	Calculated MW: 455 aa, 50 kDa	
Immunogen Catalog Number: AG18803	Observed MW: 65 kDa	

Applications

Tested Applications: WB, ELISA	Positive Controls: WB : HL-60 cells, mouse kidney tissue, HepG2 cells, K-562 cells
Cited Applications: WB	
Species Specificity: human, mouse	
Cited Species: human	

Background Information

Butyrophilin-like protein 2 (BTNL2) is a transmembrane immunoregulatory protein that is highly expressed in the gastrointestinal tract. BTNL2 belongs to the butyrophilin-like family of proteins, and several of the butyrophilins and butyrophilin-like proteins, such as BTN2A1, BTN3A1, skint-1, BTNL1 and BTNL6, have been shown to play an essential role in regulating $\gamma\delta$ T cell development and differentiation.

Notable Publications

Author	Pubmed ID	Journal	Application
Yanyun Du	35017553	Nat Commun	WB

Storage

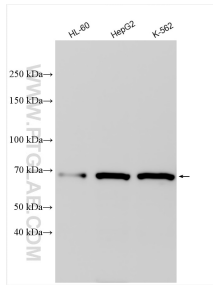
Storage:
Store at -20°C. Stable for one year after shipment.
Storage Buffer:
PBS with 0.02% sodium azide and 50% glycerol pH 7.3.
Aliquoting is unnecessary for -20°C storage

*** 20ul sizes contain 0.1% BSA

For technical support and original validation data for this product please contact:
T: 1 (888) 4PTGLAB (1-888-478-4522) (toll free in USA), or 1(312) 455-8498 (outside USA)
E: proteintech@ptglab.com
W: ptglab.com

This product is exclusively available under Proteintech Group brand and is not available to purchase from any other manufacturer.

Selected Validation Data



Various lysates were subjected to SDS PAGE followed by western blot with 25110-1-AP (BTNL2 antibody) at dilution of 1:2000 incubated at room temperature for 1.5 hours.