

For Research Use Only

# TPTE2 Polyclonal antibody

Catalog Number: 25120-1-AP



## Basic Information

|  |  |  |
|--|--|--|
| <b>Catalog Number:</b><br>25120-1-AP   | <b>GenBank Accession Number:</b><br>BC128146   | <b>Purification Method:</b><br>Antigen affinity purification                         |
| <b>Size:</b><br>150ul , Concentration: 550 µg/ml by Nanodrop and 333 µg/ml by Bradford method using BSA as the standard; | <b>GeneID (NCBI):</b><br>93492   | <b>Recommended Dilutions:</b><br>WB 1:200-1:1000<br>IHC 1:100-1:400<br>IF 1:20-1:200 |
| <b>Source:</b><br>Rabbit   | <b>Full Name:</b><br>transmembrane phosphoinositide 3-phosphatase and tensin homolog 2 |  |
| <b>Isotype:</b><br>IgG   | <b>Calculated MW:</b><br>522 aa, 61 kDa  |  |
| <b>Immunogen Catalog Number:</b><br>AG19169  | <b>Observed MW:</b><br>38-60 kDa   |  |

## Applications

**Tested Applications:**

IF, IHC, WB, ELISA

**Species Specificity:**

human

**Note-IHC: suggested antigen retrieval with TE buffer pH 9.0; (\*) Alternatively, antigen retrieval may be performed with citrate buffer pH 6.0**

**Positive Controls:**

WB : L02 cells,

IHC : human liver cancer tissue,

IF : L02 cells,

## Background Information

### Storage

**Storage:**

Store at -20°C. Stable for one year after shipment.

**Storage Buffer:**

PBS with 0.02% sodium azide and 50% glycerol pH 7.3.

Aliquoting is unnecessary for -20°C storage

\*\*\* 20ul sizes contain 0.1% BSA

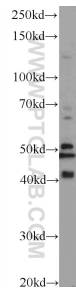
For technical support and original validation data for this product please contact:

T: 1 (888) 4PTGLAB (1-888-478-4522) (toll free in USA), or 1(312) 455-8498 (outside USA)

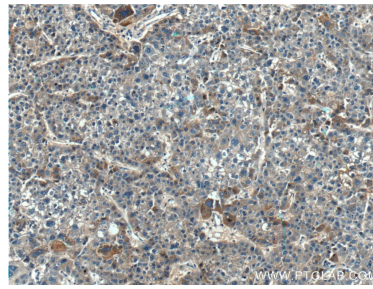
E: proteintech@ptglab.com  
W: ptglab.com

This product is exclusively available under Proteintech Group brand and is not available to purchase from any other manufacturer.

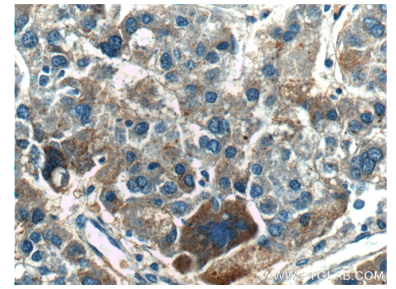
## Selected Validation Data



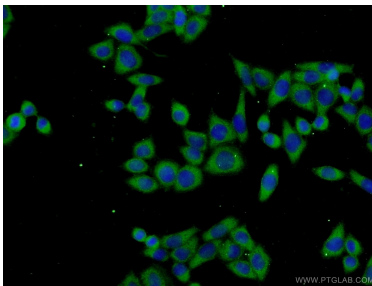
L02 cells were subjected to SDS PAGE followed by western blot with 25120-1-AP (TPTE2 Antibody) at dilution of 1:300 incubated at 4 degree celsius over night.



Immunohistochemical analysis of paraffin-embedded human liver cancer tissue slide using 25120-1-AP (TPTE2 Antibody) at dilution of 1:200 (under 10x lens).



Immunohistochemical analysis of paraffin-embedded human liver cancer tissue slide using 25120-1-AP (TPTE2 Antibody) at dilution of 1:200 (under 40x lens).



Immunofluorescent analysis of L02 cells using 25120-1-AP (TPTE2 antibody) at dilution of 1:50 and Alexa Fluor 488-conjugated AffiniPure Goat Anti-Rabbit IgG(H+L).