

For Research Use Only

WDFY3 / ALFY Polyclonal antibody

Catalog Number: 25134-1-AP



Basic Information

Catalog Number: 25134-1-AP	GenBank Accession Number: BC013377	Purification Method: Antigen affinity purification
Size: 150ul , Concentration: 900 µg/ml by Nanodrop and 433 µg/ml by Bradford method using BSA as the standard;	GeneID (NCBI): 23001	Recommended Dilutions: IHC 1:200-1:800
Source: Rabbit	Full Name: WD repeat and FYVE domain containing 3	
Isotype: IgG	Calculated MW: 3526 aa, 395 kDa	
Immunogen Catalog Number: AG18393		

Applications

Tested Applications: IHC, ELISA	Positive Controls: IHC : human breast cancer tissue, human ovary tumor tissue
Species Specificity: human	
Note-IHC: suggested antigen retrieval with TE buffer pH 9.0; (*) Alternatively, antigen retrieval may be performed with citrate buffer pH 6.0	

Background Information

WDFY3 also called ALFY, is a phosphatidylinositol 3-phosphate-binding protein that functions as a master conductor for aggregate clearance by autophagy. This protein shuttles from the nuclear membrane to colocalize with aggregated proteins, where it complexes with other autophagic components to achieve macroautophagy-mediated clearance of these aggregated proteins. However, it is not necessary for starvation-induced macroautophagy.

Storage

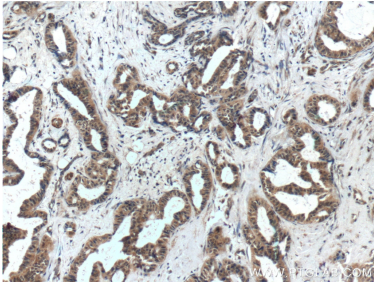
Storage:
Store at -20°C. Stable for one year after shipment.
Storage Buffer:
PBS with 0.02% sodium azide and 50% glycerol pH 7.3.
Aliquoting is unnecessary for -20°C storage

*** 20ul sizes contain 0.1% BSA

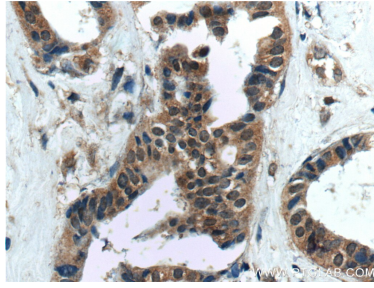
For technical support and original validation data for this product please contact:
T: 1 (888) 4PTGLAB (1-888-478-4522) (toll free in USA), or 1(312) 455-8498 (outside USA)
E: proteintech@ptglab.com
W: ptglab.com

This product is exclusively available under Proteintech Group brand and is not available to purchase from any other manufacturer.

Selected Validation Data



Immunohistochemical analysis of paraffin-embedded human breast cancer tissue slide using 25134-1-AP (WDFY3 / ALFY antibody at dilution of 1:400) (under 10x lens).



Immunohistochemical analysis of paraffin-embedded human breast cancer tissue slide using 25134-1-AP (WDFY3 / ALFY antibody at dilution of 1:400) (under 40x lens).