

For Research Use Only

ONECUT1 Polyclonal antibody

Catalog Number: 25137-1-AP

6 Publications



Basic Information

Catalog Number:

25137-1-AP

Size:

150ul, Concentration: 1000 ug/ml by Nanodrop and 433 ug/ml by Bradford method using BSA as the standard;

Source:

Rabbit

Isotype:

IgG

Immunogen Catalog Number:

AG18250

GenBank Accession Number:

BC140830

GeneID (NCBI):

3175

UNIPROT ID:

Q9UBCO

Full Name:

one cut homeobox 1

Calculated MW:

465 aa, 51 kDa

Observed MW:

51-55 kDa

Purification Method:

Antigen affinity purification

Recommended Dilutions:

WB 1:500-1:1000

IHC 1:50-1:500

Applications

Tested Applications:

WB, IHC, ELISA

Cited Applications:

WB, IF

Species Specificity:

human, mouse

Cited Species:

human, mouse, zebrafish

Note-IHC: suggested antigen retrieval with TE buffer pH 9.0; (*) Alternatively, antigen retrieval may be performed with citrate buffer pH 6.0

Positive Controls:

WB : mouse liver tissue,

IHC : human liver cancer tissue, human liver tissue

Background Information

ONECUT1, also named as Hepatocyte nuclear factor 6 (HNF6), is a 465 amino acid protein, which contains one CUT DNA-binding domain and one homeobox DNA-binding domain. ONECUT1 localizes in the nucleus and belongs to the CUT homeobox family. ONECUT1 as a transcription activator is involved in the some liver genes transcription. ONECUT1 is highly expressed in liver and lower in testis, skin.

Notable Publications

Author	Pubmed ID	Journal	Application
Giorgio Caratti	30179226	J Clin Invest	WB
Xinna Ma	35305922	Virol Sin	WB
Ruidong Hao	25653429	J Virol	WB

Storage

Storage:

Store at -20°C. Stable for one year after shipment.

Storage Buffer:

PBS with 0.02% sodium azide and 50% glycerol, pH7.3

Aliquoting is unnecessary for -20°C storage

*** 20ul sizes contain 0.1% BSA

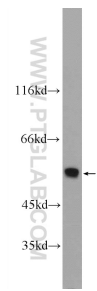
For technical support and original validation data for this product please contact:

T: 1 (888) 4PTGLAB (1-888-478-4522) (toll free in USA), or 1(312) 455-8498 (outside USA)

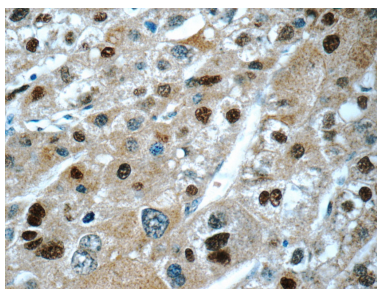
E: proteintech@ptglab.com
W: ptglab.com

This product is exclusively available under Proteintech Group brand and is not available to purchase from any other manufacturer.

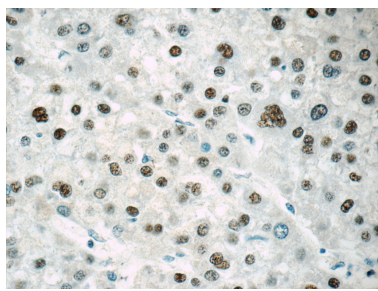
Selected Validation Data



mouse liver tissue were subjected to SDS PAGE followed by western blot with 25137-1-AP (ONECUT1 Antibody) at dilution of 1:600 incubated at room temperature for 1.5 hours.



Immunohistochemical analysis of paraffin-embedded human liver cancer tissue slide using 25137-1-AP (ONECUT1 Antibody) at dilution of 1:50 (under 40x lens).



Immunohistochemical analysis of paraffin-embedded human liver cancer tissue slide using 25137-1-AP (ONECUT1 Antibody) at dilution of 1:200 (under 40x lens).