

For Research Use Only

SYPL1 Polyclonal antibody

Catalog Number: 25145-1-AP



Basic Information

Catalog Number: 25145-1-AP	GenBank Accession Number: BC020938	Purification Method: Antigen affinity purification
Size: 150ul , Concentration: 350 ug/ml by Nanodrop;	GeneID (NCBI): 6856	Recommended Dilutions: WB: 1:500-1:3000
Source: Rabbit	UNIPROT ID: Q16563	
Isotype: IgG	Full Name: synaptophysin-like 1	
Immunogen Catalog Number: AG18482	Calculated MW: 259 aa, 29 kDa	
	Observed MW: 30 kDa	

Applications

Tested Applications: WB, ELISA	Positive Controls: WB : mouse testis tissue,
Species Specificity: human, mouse	

Background Information

Synaptophysin-like 1 (pantophysin, SYPL1), a neuroendocrine-related protein, is abundant in adipocytes and is found in cellular membrane compartments overlapping with those containing the insulin-sensitive glucose transporter type 4 (GLUT4). SYPL1, which is also found in both neuronal and non-neuronal tissues, plays an important role in inflammation, tumor proliferation, and progression.

Storage

Storage:
Store at -20°C. Stable for one year after shipment.
Storage Buffer:
PBS with 0.02% sodium azide and 50% glycerol, pH7.3
Aliquoting is unnecessary for -20°C storage

*** 20ul sizes contain 0.1% BSA

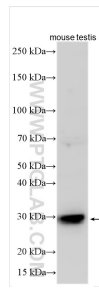
For technical support and original validation data for this product please contact:

T: 1 (888) 4PTGLAB (1-888-478-4522) (toll free in USA), or 1(312) 455-8498 (outside USA)

E: proteintech@ptglab.com
W: ptglab.com

This product is exclusively available under Proteintech Group brand and is not available to purchase from any other manufacturer.

Selected Validation Data



Various lysates were subjected to SDS PAGE followed by western blot with 25145-1-AP (SYPL1 antibody) at dilution of 1:1500 incubated at room temperature for 1.5 hours.