

For Research Use Only

Cathepsin E Polyclonal antibody, PBS Only

Catalog Number: 25146-1-PBS



Basic Information

Catalog Number: 25146-1-PBS	GenBank Accession Number: BC042537	Purification Method: Antigen affinity purification
Size: 100ug, Concentration: 1 mg/ml by Nanodrop;	GeneID (NCBI): 1510	
Source: Rabbit	UNIPROT ID: P14091	
Isotype: IgG	Full Name: cathepsin E	
Immunogen Catalog Number: AG18484	Calculated MW: 396 aa, 43 kDa	
	Observed MW: 43-48 kDa	

Applications

Tested Applications:
WB, Indirect ELISA

Species Specificity:
human, mouse, rat

Background Information

Cathepsin E (CTSE) is an aspartic protease and a member of the peptidase A1 family of proteases, along with pepsin A and cathepsin D (CTSD) (PMID: 31582345). Caathepsin E is essential for degradation of these lysosomal membrane proteins, and that its deficiency is implicated in the development of a new form of lysosomal storage disorder associated with the elevation of lysosomal pH (PMID: 17095504). It associates with lysosomal and endosomal pathways participating actively in immune response regulation. Cathepsin E specifically induces growth arrest and apoptosis in human prostate cancer cell lines (PMID: 20482316).

Storage

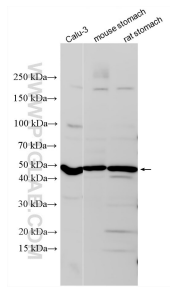
Storage:
Store at -80°C.

Storage Buffer:
PBS only, pH7.3

For technical support and original validation data for this product please contact:
T: 1 (888) 4PTGLAB (1-888-478-4522) (toll free in USA), or 1(312) 455-8498 (outside USA) E: proteintech@ptglab.com
W: ptglab.com

This product is exclusively available under Proteintech Group brand and is not available to purchase from any other manufacturer.

Selected Validation Data



Various lysates were subjected to SDS PAGE followed by western blot with 25146-1-AP (Cathepsin E antibody) at dilution of 1:1000 incubated at room temperature for 1.5 hours. This data was developed using the same antibody clone with 25146-1-PBS in a different storage buffer formulation.