

For Research Use Only

LIN7A Polyclonal antibody

Catalog Number: 25150-1-AP

1 Publications



Basic Information

Catalog Number:

25150-1-AP

Size:

150ul , Concentration: 700 µg/ml by Nanodrop and 333 µg/ml by Bradford method using BSA as the standard;

Source:

Rabbit

Isotype:

IgG

Immunogen Catalog Number:

AG18440

GenBank Accession Number:

BC118609

GeneID (NCBI):

8825

Full Name:

lin-7 homolog A (C. elegans)

Calculated MW:

233 aa, 26 kDa

Observed MW:

28-30 kDa

Purification Method:

Antigen affinity purification

Recommended Dilutions:

WB 1:500-1:2000

IP 0.5-4.0 ug for IP and 1:500-1:2000 for WB

IHC 1:20-1:200

Applications

Tested Applications:

IHC, IP, WB, ELISA

Cited Applications:

IF

Species Specificity:

human, mouse, rat

Cited Species:

rat

Positive Controls:

WB : rat brain tissue,

IP : mouse brain tissue,

IHC : mouse brain tissue,

Note-IHC: suggested antigen retrieval with TE buffer pH 9.0; (*) Alternatively, antigen retrieval may be performed with citrate buffer pH 6.0

Background Information

Notable Publications

Author	Pubmed ID	Journal	Application
Haibin Tian	36185374	iScience	IF

Storage

Storage:

Store at -20°C. Stable for one year after shipment.

Storage Buffer:

PBS with 0.02% sodium azide and 50% glycerol pH 7.3.

Aliquoting is unnecessary for -20°C storage

*** 20ul sizes contain 0.1% BSA

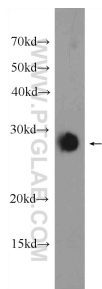
For technical support and original validation data for this product please contact:

T: 1 (888) 4PTGLAB (1-888-478-4522) (toll free in USA), or 1(312) 455-8498 (outside USA)

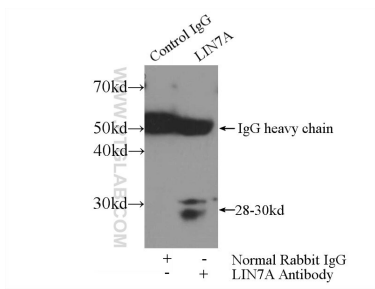
E: proteintech@ptglab.com
W: ptglab.com

This product is exclusively available under Proteintech Group brand and is not available to purchase from any other manufacturer.

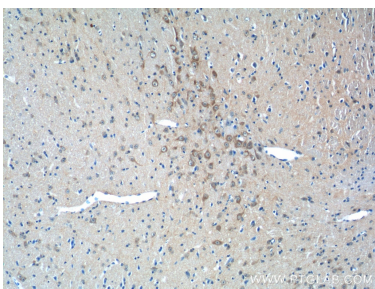
Selected Validation Data



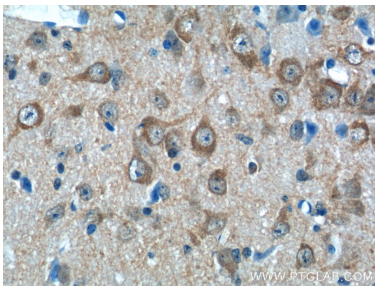
rat brain tissue were subjected to SDS PAGE followed by western blot with 25150-1-AP (LIN7A Antibody) at dilution of 1:1000 incubated at 4 degree celsius over night.



IP Result of anti-LIN7A (IP:25150-1-AP, 3ug; Detection:25150-1-AP 1:1000) with mouse brain tissue lysate 4000ug.



Immunohistochemical analysis of paraffin-embedded mouse brain tissue slide using 25150-1-AP (LIN7A Antibody) at dilution of 1:50 (under 10x lens).



Immunohistochemical analysis of paraffin-embedded mouse brain tissue slide using 25150-1-AP (LIN7A Antibody) at dilution of 1:50 (under 40x lens).