

For Research Use Only

PPP1R12C Polyclonal antibody

Catalog Number: 25157-1-AP



Basic Information

Catalog Number:

25157-1-AP

Size:

150ul , Concentration: 280 ug/ml by Nanodrop;

Source:

Rabbit

Isotype:

IgG

Immunogen Catalog Number:

AG18559

GenBank Accession Number:

BC008030

GeneID (NCBI):

54776

UNIPROT ID:

Q9BZL4

Full Name:

protein phosphatase 1, regulatory (inhibitor) subunit 12C

Calculated MW:

782 aa, 85 kDa

Observed MW:

90-100 kDa

Purification Method:

Antigen affinity purification

Recommended Dilutions:

WB 1:5000-1:50000

Applications

Tested Applications:

WB, ELISA

Species Specificity:

human, mouse, rat

Positive Controls:

WB : mouse colon tissue, HEK-293T cells, mouse heart tissue, rat heart tissue, rat colon tissue

Background Information

PPP1R12C is a subunit of myosin phosphatase. PPP1R12C regulates the catalytic activity of protein phosphatase 1 delta and assembly of the actin cytoskeleton.

Storage

Storage:

Store at -20°C. Stable for one year after shipment.

Storage Buffer:

PBS with 0.02% sodium azide and 50% glycerol pH 7.3.

Aliquoting is unnecessary for -20°C storage

*** 20ul sizes contain 0.1% BSA

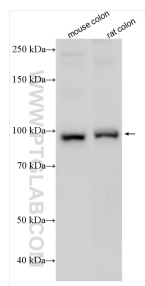
For technical support and original validation data for this product please contact:

T: 1 (888) 4PTGLAB (1-888-478-4522) (toll free in USA), or 1(312) 455-8498 (outside USA)

E: proteintech@ptglab.com
W: ptglab.com

This product is exclusively available under Proteintech Group brand and is not available to purchase from any other manufacturer.

Selected Validation Data



Various lysates were subjected to SDS PAGE followed by western blot with 25157-1-AP (PPP1R12C antibody) at dilution of 1:10000 incubated at room temperature for 1.5 hours.