

For Research Use Only

HIVEP1 Polyclonal antibody

Catalog Number: 25168-1-AP



Basic Information

Catalog Number: 25168-1-AP	GenBank Accession Number: BC140816	Purification Method: Antigen affinity purification
Size: 150ul , Concentration: 900 µg/ml by Nanodrop and 333 µg/ml by Bradford method using BSA as the standard;	GeneID (NCBI): 3096	Recommended Dilutions: IHC 1:20-1:200
Source: Rabbit	Full Name: human immunodeficiency virus type I enhancer binding protein 1	
Isotype: IgG	Calculated MW: 2718 aa, 297 kDa	
Immunogen Catalog Number: AG18462		

Applications

Tested Applications: IHC, ELISA	Positive Controls: IHC : human stomach tissue, human testis tissue
Species Specificity: human	
Note-IHC: suggested antigen retrieval with TE buffer pH 9.0; (*) Alternatively, antigen retrieval may be performed with citrate buffer pH 6.0	

Background Information

HIVEP1 (human immunodeficiency virus type I enhancer binding protein 1), also known as CIRIP (cirhin interaction protein), MBP-1 (major histocompatibility complex binding protein 1), ZNF 40, CRYBP1 or PRDII-BF1 (positive regulatory domain II binding factor 1), is a 2718 amino acid DNA-binding protein, which contains five C2H2-type zinc fingers. HIVEP1 may also participate in T-cell activation and apoptosis.

Storage

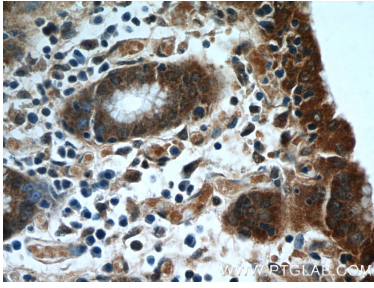
Storage:
Store at -20°C. Stable for one year after shipment.
Storage Buffer:
PBS with 0.02% sodium azide and 50% glycerol pH 7.3.
Aliquoting is unnecessary for -20°C storage

*** 20ul sizes contain 0.1% BSA

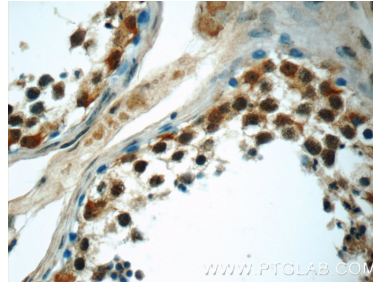
For technical support and original validation data for this product please contact:
T: 1 (888) 4PTGLAB (1-888-478-4522) (toll free in USA), or 1(312) 455-8498 (outside USA) E: proteintech@ptglab.com W: ptglab.com

This product is exclusively available under Proteintech Group brand and is not available to purchase from any other manufacturer.

Selected Validation Data



Immunohistochemical analysis of paraffin-embedded human stomach tissue slide using 25168-1-AP (HIVEP1 Antibody) at dilution of 1:50 (under 40x lens).



Immunohistochemical analysis of paraffin-embedded human testis tissue slide using 25168-1-AP (HIVEP1 Antibody) at dilution of 1:50 (under 40x lens).