

For Research Use Only

# C8B Polyclonal antibody

Catalog Number: 25184-1-AP



## Basic Information

<b>Catalog Number:</b> 25184-1-AP	<b>GenBank Accession Number:</b> BC130575	<b>Purification Method:</b> Antigen affinity purification
<b>Size:</b> 150ul , Concentration: 750 µg/ml by Nanodrop;	<b>GeneID (NCBI):</b> 732	<b>Recommended Dilutions:</b> WB 1:1000-1:8000
<b>Source:</b> Rabbit	<b>Full Name:</b> complement component 8, beta polypeptide	
<b>Isotype:</b> IgG	<b>Calculated MW:</b> 591 aa, 67 kDa	
<b>Immunogen Catalog Number:</b> AG18388	<b>Observed MW:</b> 64 kDa	

## Applications

<b>Tested Applications:</b> WB, ELISA	<b>Positive Controls:</b> WB : human plasma,
<b>Species Specificity:</b> human	

## Background Information

The beta chain of complement component 8 (C8B) is one of three different subunits (alpha, beta, and gamma) of the complement component 8 (C8), which is a component of the MAC (membrane attack complex). The deficiency of C8B leads to the type II of C8 deficiency, leading to the malfunction of MAC.

## Storage

**Storage:**  
Store at -20°C. Stable for one year after shipment.  
**Storage Buffer:**  
PBS with 0.02% sodium azide and 50% glycerol pH 7.3.  
Aliquoting is unnecessary for -20°C storage

\*\*\* 20ul sizes contain 0.1% BSA

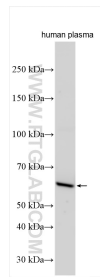
For technical support and original validation data for this product please contact:

T: 1 (888) 4PTGLAB (1-888-478-4522) (toll free in USA), or 1(312) 455-8498 (outside USA)

E: [proteintech@ptglab.com](mailto:proteintech@ptglab.com)  
W: [ptglab.com](http://ptglab.com)

This product is exclusively available under Proteintech Group brand and is not available to purchase from any other manufacturer.

## Selected Validation Data



human plasma was subjected to SDS PAGE followed by western blot with 25184-1-AP (C8B antibody) at dilution of 1:4000 incubated at room temperature for 1.5 hours.