

For Research Use Only

C8B Polyclonal antibody, PBS Only

Catalog Number: 25184-1-PBS



Basic Information

Catalog Number:

25184-1-PBS

Size:

100ug, Concentration: 1 mg/ml by Nanodrop;

Source:

Rabbit

Isotype:

IgG

Immunogen Catalog Number:

AG18388

GenBank Accession Number:

BC130575

GeneID (NCBI):

732

UNIPROT ID:

P07358

Full Name:

complement component 8, beta polypeptide

Calculated MW:

591 aa, 67 kDa

Observed MW:

64 kDa

Purification Method:

Antigen affinity purification

Applications

Tested Applications:

WB, IHC, Indirect ELISA

Species Specificity:

human

Background Information

The beta chain of complement component 8 (C8B) is one of three different subunits (alpha, beta, and gamma) of the complement component 8 (C8), which is a component of the MAC (membrane attack complex). The deficiency of C8B leads to the type II of C8 deficiency, leading to the malfunction of MAC.

Storage

Storage:

Store at -80°C.

Storage Buffer:

PBS only, pH7.3

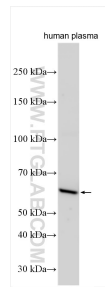
For technical support and original validation data for this product please contact:

T: 1 (888) 4PTGLAB (1-888-478-4522) (toll free in USA), or 1(312) 455-8498 (outside USA)

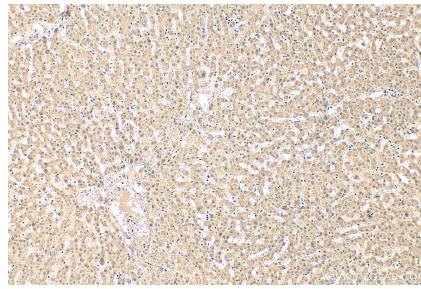
E: proteintech@ptglab.com
W: ptglab.com

This product is exclusively available under Proteintech Group brand and is not available to purchase from any other manufacturer.

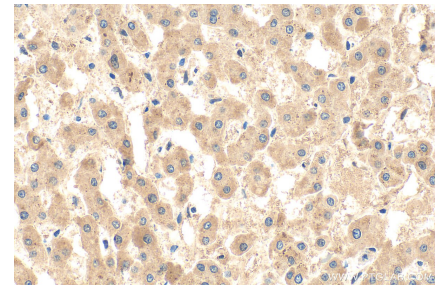
Selected Validation Data



human plasma was subjected to SDS PAGE followed by western blot with 25184-1-AP (C8B antibody) at dilution of 1:4000 incubated at room temperature for 1.5 hours. This data was developed using the same antibody clone with 25184-1-PBS in a different storage buffer formulation.



Immunohistochemical analysis of paraffin-embedded human liver tissue slide using 25184-1-AP (C8B antibody) at dilution of 1:400 (under 10x lens). Heat mediated antigen retrieval with Tris-EDTA buffer (pH 9.0). This data was developed using the same antibody clone with 25184-1-PBS in a different storage buffer formulation.



Immunohistochemical analysis of paraffin-embedded human liver tissue slide using 25184-1-AP (C8B antibody) at dilution of 1:400 (under 40x lens). Heat mediated antigen retrieval with Tris-EDTA buffer (pH 9.0). This data was developed using the same antibody clone with 25184-1-PBS in a different storage buffer formulation.