

For Research Use Only

RSL24D1 Polyclonal antibody

Catalog Number: 25190-1-AP **3 Publications**



Basic Information

Catalog Number: 25190-1-AP	GenBank Accession Number: BC008409	Purification Method: Antigen affinity purification
Size: 150ul , Concentration: 500 µg/ml by Nanodrop and 273 µg/ml by Bradford method using BSA as the standard;	GeneID (NCBI): 51187	Recommended Dilutions: WB 1:500-1:1000 IF 1:10-1:100
Source: Rabbit	Full Name: ribosomal L24 domain containing 1	
Isotype: IgG	Calculated MW: 163 aa, 20 kDa	
Immunogen Catalog Number: AG18195	Observed MW: 20 kDa	

Applications

Tested Applications: IF, WB, ELISA	Positive Controls: WB : HepG2 cells, HL-60 cells, PC-3 cells
Cited Applications: IF, WB	IF : HepG2 cells,
Species Specificity: human	
Cited Species: human	

Background Information

Notable Publications

Author	Pubmed ID	Journal	Application
Mason A McCool	36323459	RNA	WB
Chunyang Ni	35354024	Cell Rep	WB, IF
Maikke B Ohlson	36809113	mBio	IF

Storage

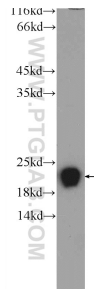
Storage:
Store at -20°C. Stable for one year after shipment.
Storage Buffer:
PBS with 0.02% sodium azide and 50% glycerol pH 7.3.
Aliquoting is unnecessary for -20°C storage

*** 20ul sizes contain 0.1% BSA

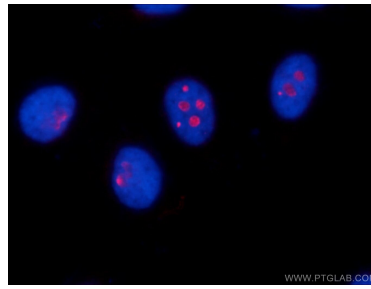
For technical support and original validation data for this product please contact:
T: 1 (888) 4PTGLAB (1-888-478-4522) (toll free in USA), or 1(312) 455-8498 (outside USA)
E: proteintech@ptglab.com
W: ptglab.com

This product is exclusively available under Proteintech Group brand and is not available to purchase from any other manufacturer.

Selected Validation Data



HepG2 cells were subjected to SDS PAGE followed by western blot with 25190-1-AP (RSL24D1 Antibody) at dilution of 1:600 incubated at room temperature for 1.5 hours.



Immunofluorescent analysis of HepG2 cells using 25190-1-AP (RSL24D1 antibody) at dilution of 1:25 and Rhodamine-Goat anti-Rabbit IgG.