

For Research Use Only

RSL24D1 Polyclonal antibody, PBS Only

Catalog Number: 25190-1-PBS



Basic Information

Catalog Number: 25190-1-PBS	GenBank Accession Number: BC008409	Purification Method: Antigen affinity purification
Size: 100ug, Concentration: 1 mg/ml by Nanodrop;	GeneID (NCBI): 51187	
Source: Rabbit	UNIPROT ID: Q9UHA3	
Isotype: IgG	Full Name: ribosomal L24 domain containing 1	
Immunogen Catalog Number: AG18195	Calculated MW: 163 aa, 20 kDa	
	Observed MW: 20 kDa	

Applications

Tested Applications:
WB, IF/ICC, Indirect ELISA

Species Specificity:
human

Background Information

RSL24D1 (Ribosomal L24 Domain Containing 1) is a ribosomal protein that is primarily localized in the nucleolus and is involved in the biogenesis of the 60S ribosomal subunit. In mouse embryonic stem cells (ESCs), the expression level of RSL24D1 is high and significantly decreases during cell differentiation. The role of RSL24D1 in ribosome biogenesis includes facilitating proper protein docking in nucleolar and cytoplasmic precursor particles. After the completion of biogenesis, RSL24D1 dissociates from the particles and is thought to be replaced by ribosomal protein L24.

Storage

Storage:
Store at -80°C.

Storage Buffer:
PBS only, pH7.3

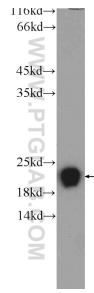
For technical support and original validation data for this product please contact:

T: 1 (888) 4PTGLAB (1-888-478-4522) (toll free in USA), or 1(312) 455-8498 (outside USA)

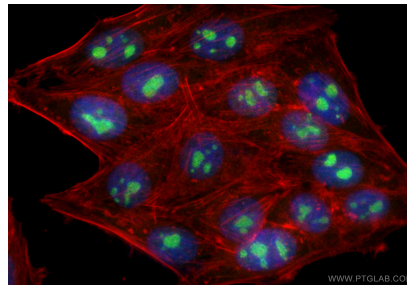
E: proteintech@ptglab.com
W: ptglab.com

This product is exclusively available under Proteintech Group brand and is not available to purchase from any other manufacturer.

Selected Validation Data



HepG2 cells were subjected to SDS PAGE followed by western blot with 25190-1-AP (RSL24D1 Antibody) at dilution of 1:600 incubated at room temperature for 1.5 hours. This data was developed using the same antibody clone with 25190-1-PBS in a different storage buffer formulation.



Immunofluorescent analysis of (4% PFA) fixed HepG2 cells using RSL24D1 antibody (25190-1-AP) at dilution of 1:200 and CoraLite® 488-Conjugated Goat Anti-Rabbit IgG(H+L) (SA00013-2), CL594-phalloidin (red). This data was developed using the same antibody clone with 25190-1-PBS in a different storage buffer formulation.