

For Research Use Only

# WIPI1 Polyclonal antibody, PBS Only

Catalog Number: 25204-1-PBS

Featured Product



## Basic Information

### Catalog Number:

25204-1-PBS

### Size:

100ug, Concentration: 1 mg/ml by Nanodrop;

### Source:

Rabbit

### Isotype:

IgG

### Immunogen Catalog Number:

AG18461

### GenBank Accession Number:

BC039867

### GeneID (NCBI):

55062

### UNIPROT ID:

Q5MNZ9

### Full Name:

WD repeat domain, phosphoinositide interacting 1

### Calculated MW:

446 aa, 49 kDa

### Observed MW:

49 kDa

### Purification Method:

Antigen affinity purification

## Applications

### Tested Applications:

WB, IHC, Indirect ELISA

### Species Specificity:

human, mouse

## Background Information

WIPI1, or WD repeat domain, phosphoinositide-interacting protein 1, is a member of the WD40 repeat family of proteins, which are key components of many essential biological functions. WIPI1 is involved in the regulation of autophagy, a cellular process critical for maintaining cellular integrity and recycling intracellular proteins, lipids, and organelles. WIPI1 is characterized by its 7-bladed  $\beta$ -propeller structure and contains a conserved motif for interaction with phospholipids, specifically binding to phosphoinositides. This interaction is crucial for its function in autophagy, where it acts as an effector of phosphatidylinositol 3-phosphate (PtdIns3P). WIPI1 and WIPI2 are among the first proteins to be recruited during autophagy, with WIPI2 interacting with components of the ULK1/2 complex and PtdIns3P, tethering the phagophore to the endoplasmic reticulum (ER). WIPI1 supports the function of WIPI2 in recruiting the ATG16L complex, which is essential for LC3 lipidation and autophagosome formation.

## Storage

### Storage:

Store at -80°C.

### Storage Buffer:

PBS Only

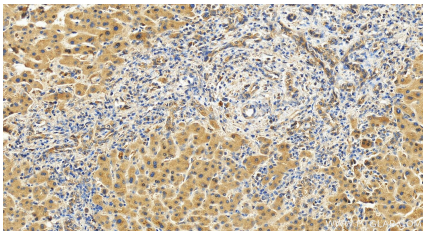
For technical support and original validation data for this product please contact:

T: 1 (888) 4PTGLAB (1-888-478-4522) (toll free in USA), or 1(312) 455-8498 (outside USA)

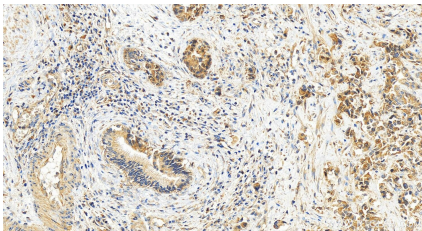
E: [proteintech@ptglab.com](mailto:proteintech@ptglab.com)  
W: [ptglab.com](http://ptglab.com)

This product is exclusively available under Proteintech Group brand and is not available to purchase from any other manufacturer.

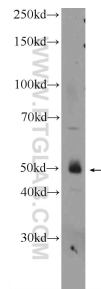
Selected Validation Data



Immunohistochemical analysis of paraffin-embedded human intrahepatic cholangiocarcinoma tissue slide using 25204-1-AP (WIPI1 antibody) at dilution of 1:200 (under 20x lens). Heat mediated antigen retrieval with Tris-EDTA buffer (pH 9.0). This data was developed using the same antibody clone with 25204-1-PBS in a different storage buffer formulation.



Immunohistochemical analysis of paraffin-embedded human intrahepatic cholangiocarcinoma tissue slide using 25204-1-AP (WIPI1 antibody) at dilution of 1:200 (under 20x lens). Heat mediated antigen retrieval with Tris-EDTA buffer (pH 9.0). This data was developed using the same antibody clone with 25204-1-PBS in a different storage buffer formulation.



SW 1990 cells were subjected to SDS PAGE followed by western blot with 25204-1-AP (WIPI1 Antibody) at dilution of 1:1000 incubated at room temperature for 1.5 hours. This data was developed using the same antibody clone with 25204-1-PBS in a different storage buffer formulation.