

For Research Use Only

# Adropin Polyclonal antibody

Catalog Number: 25213-1-AP



## Basic Information

<b>Catalog Number:</b> 25213-1-AP	<b>GenBank Accession Number:</b> BC022101	<b>Purification Method:</b> Antigen affinity purification
<b>Size:</b> 150ul , Concentration: 1000 ug/ml by Nanodrop;	<b>GeneID (NCBI):</b> 375704	<b>Recommended Dilutions:</b> IHC 1:50-1:500 IF/ICC 1:200-1:800
<b>Source:</b> Rabbit	<b>UNIPROT ID:</b> Q6UWT2	
<b>Isotype:</b> IgG	<b>Full Name:</b> energy homeostasis associated	
<b>Immunogen Catalog Number:</b> AG19526	<b>Calculated MW:</b> 75 aa, 8 kDa	

## Applications

<b>Tested Applications:</b> IHC, IF/ICC, ELISA	<b>Positive Controls:</b>
<b>Species Specificity:</b> human	<b>IHC :</b> human liver tissue, <b>IF/ICC :</b> SH-SY5Y cells,
<b>Note-IHC:</b> suggested antigen retrieval with <b>TE buffer pH 9.0; (*) Alternatively, antigen retrieval may be performed with citrate buffer pH 6.0</b>	

## Background Information

Adropin is a nutritionally regulated peptide hormone that is primarily secreted by the liver and is important in maintaining metabolic and non-metabolic homeostasis. Adropin regulates glucose and fatty acid metabolism and exerts a potential protective effect on endothelial function through modulation of endothelial nitric oxide (NO) synthesis. It is associated with obesity and is involved in the prevention of insulin resistance, dyslipidemia, and impaired glucose tolerance (PMID: 22318315).

## Storage

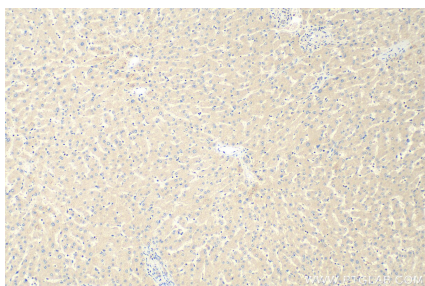
**Storage:**  
Store at -20°C. Stable for one year after shipment.  
**Storage Buffer:**  
PBS with 0.02% sodium azide and 50% glycerol pH 7.3.  
**Aliquoting is unnecessary for -20°C storage**

**\*\*\* 20ul sizes contain 0.1% BSA**

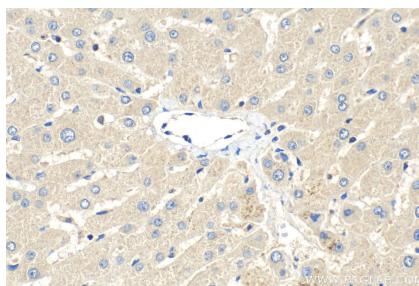
For technical support and original validation data for this product please contact:  
T: 1 (888) 4PTGLAB (1-888-478-4522) (toll free in USA), or 1(312) 455-8498 (outside USA)  
E: [proteintech@ptglab.com](mailto:proteintech@ptglab.com)  
W: [ptglab.com](http://ptglab.com)

This product is exclusively available under Proteintech Group brand and is not available to purchase from any other manufacturer.

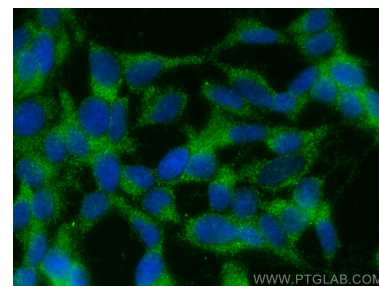
## Selected Validation Data



Immunohistochemical analysis of paraffin-embedded human liver tissue slide using 25213-1-AP (Adropin antibody) at dilution of 1:200 (under 10x lens). Heat mediated antigen retrieval with Tris-EDTA buffer (pH 9.0).



Immunohistochemical analysis of paraffin-embedded human liver tissue slide using 25213-1-AP (Adropin antibody) at dilution of 1:200 (under 40x lens). Heat mediated antigen retrieval with Tris-EDTA buffer (pH 9.0).



Immunofluorescent analysis of (-20°C Ethanol) fixed SH-SY5Y cells using Adropin antibody (25213-1-AP) at dilution of 1:400 and CoraLite®488-Conjugated Goat Anti-Rabbit IgG(H+L).