

For Research Use Only

KLHL28 Polyclonal antibody

Catalog Number: 25224-1-AP



Basic Information

Catalog Number: 25224-1-AP	GenBank Accession Number: BC121009	Purification Method: Antigen affinity purification
Size: 150ul , Concentration: 650 µg/ml by Nanodrop and 387 µg/ml by Bradford method using BSA as the standard;	GeneID (NCBI): 54813	Recommended Dilutions: WB 1:200-1:1000 IHC 1:20-1:200
Source: Rabbit	Full Name: kelch-like 28 (Drosophila)	
Isotype: IgG	Calculated MW: 571 aa, 64 kDa	
Immunogen Catalog Number: AG18665	Observed MW: 64 kDa	

Applications

Tested Applications: IHC, WB, ELISA	Positive Controls:
Species Specificity: human, mouse	WB : Jurkat cells, mouse brain tissue
Note-IHC: suggested antigen retrieval with TE buffer pH 9.0; (*) Alternatively, antigen retrieval may be performed with citrate buffer pH 6.0	IHC : human colon tissue, human liver tissue

Background Information

KLHL28 also named as BTBD5 or Kelch like protein 28 is a 571 amino acid protein, which contains one BTB domain and six kelch repeats. KLHL28 localizes in the cytoplasm and belongs to BTB/kelch-associated proteins family. KLHL28 may play a role in organizing the actin cytoskeleton of the brain cells. KLHL28 is expressed as two isoforms produced by alternative splicing.

Storage

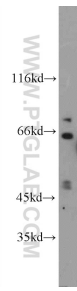
Storage:
Store at -20°C. Stable for one year after shipment.
Storage Buffer:
PBS with 0.02% sodium azide and 50% glycerol pH 7.3.
Aliquoting is unnecessary for -20°C storage

*** 20ul sizes contain 0.1% BSA

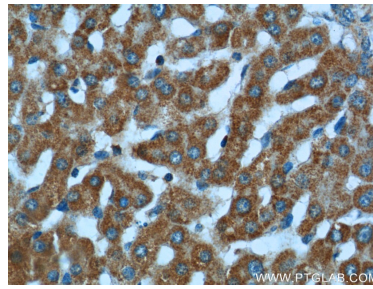
For technical support and original validation data for this product please contact:
T: 1 (888) 4PTGLAB (1-888-478-4522) (toll free in USA), or 1(312) 455-8498 (outside USA)
E: proteintech@ptglab.com
W: ptglab.com

This product is exclusively available under Proteintech Group brand and is not available to purchase from any other manufacturer.

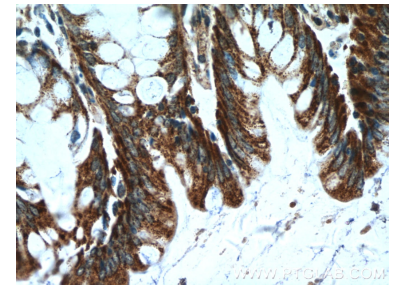
Selected Validation Data



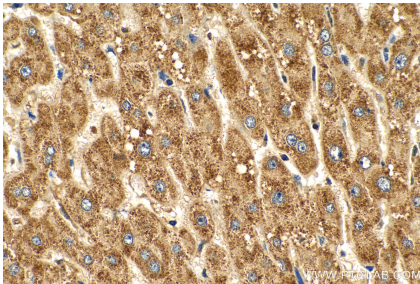
Jurkat cells were subjected to SDS PAGE followed by western blot with 25224-1-AP (KLHL28 Antibody) at dilution of 1:300 incubated at room temperature for 1.5 hours.



Immunohistochemical analysis of paraffin-embedded human liver tissue slide using 25224-1-AP (KLHL28 Antibody) at dilution of 1:50 (under 40x lens).



Immunohistochemical analysis of paraffin-embedded human colon tissue slide using 25224-1-AP (KLHL28 Antibody) at dilution of 1:50 (under 40x lens).



Immunohistochemical analysis of paraffin-embedded human liver tissue slide using 25224-1-AP (KLHL28 antibody) at dilution of 1:200 (under 40x lens). Heat mediated antigen retrieval with Tris-EDTA buffer (pH 9.0).