

For Research Use Only

# KLHL28 Polyclonal antibody, PBS Only

Catalog Number: 25224-1-PBS



## Basic Information

**Catalog Number:**

25224-1-PBS

**Size:**

100ug, Concentration: 1 mg/ml by Nanodrop;

**Source:**

Rabbit

**Isotype:**

IgG

**Immunogen Catalog Number:**

AG18665

**GenBank Accession Number:**

BC121009

**GeneID (NCBI):**

54813

**UNIPROT ID:**

Q9NXS3

**Full Name:**

kelch-like 28 (Drosophila)

**Calculated MW:**

571 aa, 64 kDa

**Observed MW:**

64 kDa

**Purification Method:**

Antigen affinity purification

## Applications

**Tested Applications:**

WB, IHC, Indirect ELISA

**Species Specificity:**

human, mouse

## Background Information

KLHL28 also named as BTBD5 or Kelch like protein 28 is a 571 amino acid protein, which contains one BTB domain and six kelch repeats. KLHL28 localizes in the cytoplasm and belongs to BTB/kelch-associated proteins family. KLHL28 may play a role in organizing the actin cytoskeleton of the brain cells. KLHL28 is expressed as two isoforms produced by alternative splicing.

## Storage

**Storage:**

Store at -80°C.

**Storage Buffer:**

PBS only, pH7.3

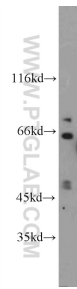
For technical support and original validation data for this product please contact:

T: 1 (888) 4PTGLAB (1-888-478-4522) (toll free in USA), or 1(312) 455-8498 (outside USA)

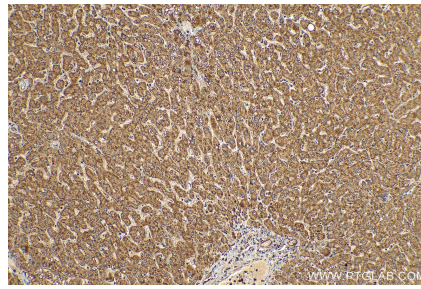
E: [proteintech@ptglab.com](mailto:proteintech@ptglab.com)  
W: [ptglab.com](http://ptglab.com)

**This product is exclusively available under Proteintech Group brand and is not available to purchase from any other manufacturer.**

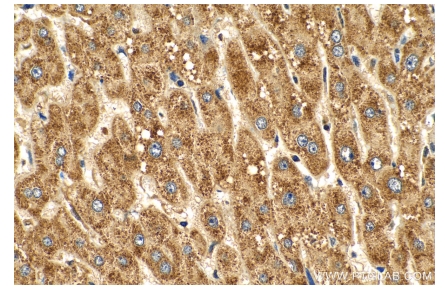
## Selected Validation Data



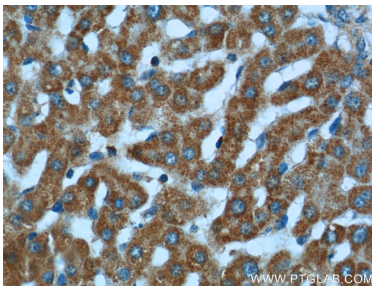
Jurkat cells were subjected to SDS PAGE followed by western blot with 25224-1-AP (KLHL28 Antibody) at dilution of 1:300 incubated at room temperature for 1.5 hours. This data was developed using the same antibody clone with 25224-1-PBS in a different storage buffer formulation.



Immunohistochemical analysis of paraffin-embedded human liver tissue slide using 25224-1-AP (KLHL28 antibody) at dilution of 1:200 (under 10x lens). Heat mediated antigen retrieval with Tris-EDTA buffer (pH 9.0). This data was developed using the same antibody clone with 25224-1-PBS in a different storage buffer formulation.



Immunohistochemical analysis of paraffin-embedded human liver tissue slide using 25224-1-AP (KLHL28 antibody) at dilution of 1:200 (under 40x lens). Heat mediated antigen retrieval with Tris-EDTA buffer (pH 9.0). This data was developed using the same antibody clone with 25224-1-PBS in a different storage buffer formulation.



Immunohistochemical analysis of paraffin-embedded human liver tissue slide using 25224-1-AP (KLHL28 Antibody) at dilution of 1:50 (under 40x lens). This data was developed using the same antibody clone with 25224-1-PBS in a different storage buffer formulation.