

For Research Use Only

MARF1 Polyclonal antibody

Catalog Number: 25233-1-AP

1 Publications



Basic Information

Catalog Number:

25233-1-AP

Size:

150ul, Concentration: 500 ug/ml by Nanodrop and 313 ug/ml by Bradford method using BSA as the standard;

Source:

Rabbit

Isotype:

IgG

Immunogen Catalog Number:

AG18905

GenBank Accession Number:

BC137165

GeneID (NCBI):

9665

UNIPROT ID:

Q9Y4F3

Full Name:

KIAA0430

Calculated MW:

1742 aa, 193 kDa

Observed MW:

192 kDa

Purification Method:

Antigen affinity purification

Recommended Dilutions:

WB 1:500-1:1000

IP 0.5-4.0 ug for 1.0-3.0 mg of total protein lysate

IHC 1:20-1:200

IF/ICC 1:50-1:500

Applications

Tested Applications:

WB, IHC, IF/ICC, IP, ELISA

Cited Applications:

WB

Species Specificity:

human, mouse

Cited Species:

human

Positive Controls:

WB : HEK-293 cells, HeLa cells

IP : HeLa cells,

IHC : human small intestine tissue, human ovary tissue

IF/ICC : HEK-293 cells,

Note-IHC: suggested antigen retrieval with TE buffer pH 9.0; (*) Alternatively, antigen retrieval may be performed with citrate buffer pH 6.0

Background Information

MARF1, also known as KIAA0430, or LKAP, which is expressed in peroxisome. MARF1 is essential regulator of oogenesis and required for female meiotic progression to repress transposable elements and preventing their mobilization, which is essential for the germline integrity. MARF1 probably acts via some RNA metabolic process and is equivalent to the piRNA system in males, which mediates the repression of transposable elements during meiosis by forming complexes composed of RNAs and governs the methylation and subsequent repression of transposons.

Notable Publications

Author	Pubmed ID	Journal	Application
Bohan Li	35603216	Front Immunol	WB

Storage

Storage:

Store at -20°C. Stable for one year after shipment.

Storage Buffer:

PBS with 0.02% sodium azide and 50% glycerol pH 7.3.

Aliquoting is unnecessary for -20°C storage

*** 20ul sizes contain 0.1% BSA

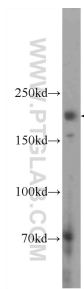
For technical support and original validation data for this product please contact:

T: 1 (888) 4PTGLAB (1-888-478-4522) (toll free in USA), or 1(312) 455-8498 (outside USA)

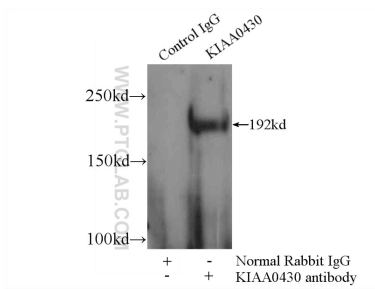
E: proteintech@ptglab.com
W: ptglab.com

This product is exclusively available under Proteintech Group brand and is not available to purchase from any other manufacturer.

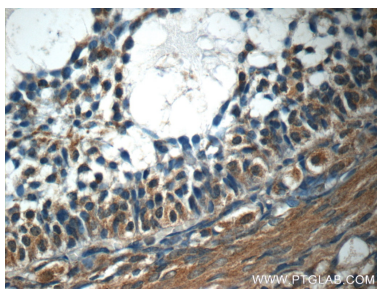
Selected Validation Data



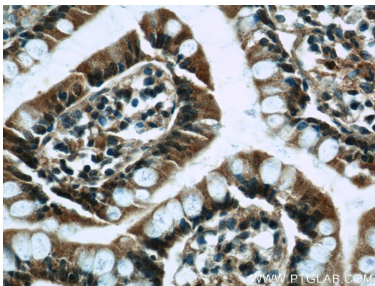
HEK-293 cells were subjected to SDS PAGE followed by western blot with 25233-1-AP (KIAA0430 Antibody) at dilution of 1:600 incubated at room temperature for 1.5 hours.



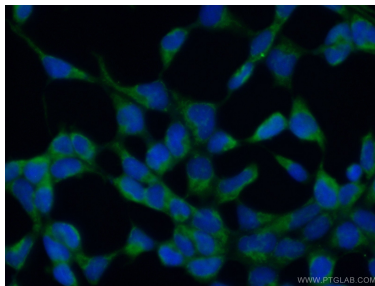
IP result of anti-MARF1 (IP:25233-1-AP, 5ug; Detection:25233-1-AP 1:300) with HeLa cells lysate 2000ug.



Immunohistochemical analysis of paraffin-embedded human ovary tissue slide using 25233-1-AP (KIAA0430 Antibody) at dilution of 1:50 (under 40x lens).



Immunohistochemical analysis of paraffin-embedded human small intestine tissue slide using 25233-1-AP (KIAA0430 Antibody) at dilution of 1:50 (under 40x lens).



Immunofluorescent analysis of (10% Formaldehyde) fixed HEK-293 cells using 25233-1-AP (KIAA0430 antibody) at dilution of 1:50 and Alexa Fluor 488-conjugated Goat Anti-Rabbit IgG(H+L).