

For Research Use Only

PHLPPL Polyclonal antibody

Catalog Number: 25244-1-AP

Featured Product

17 Publications



Basic Information

Catalog Number:

25244-1-AP

Size:

150ul, Concentration: 450 ug/ml by Nanodrop and 320 ug/ml by Bradford method using BSA as the standard;

Source:

Rabbit

Isotype:

IgG

Immunogen Catalog Number:

AG19000

GenBank Accession Number:

BC129927

GeneID (NCBI):

23035

UNIPROT ID:

Q6ZVD8

Full Name:

PH domain and leucine rich repeat protein phosphatase-like

Calculated MW:

1323 aa, 147 kDa

Observed MW:

147 kDa

Purification Method:

Antigen affinity purification

Recommended Dilutions:

WB 1:500-1:2000

IP 0.5-4.0 ug for 1.0-3.0 mg of total protein lysate

IHC 1:20-1:200

IF/ICC 1:10-1:100

Applications

Tested Applications:

WB, IHC, IF/ICC, IP, ELISA

Cited Applications:

WB, IHC, IF

Species Specificity:

human, mouse, rat

Cited Species:

human, mouse, rat, zebrafish

Note-IHC: suggested antigen retrieval with TE buffer pH 9.0; (*) Alternatively, antigen retrieval may be performed with citrate buffer pH 6.0

Positive Controls:

WB : HeLa cells, NIH/3T3 cells

IP : HeLa cells,

IHC : human colon cancer tissue, human colon tissue

IF/ICC : HeLa cells,

Background Information

PHLPPL also named as KIAA0931 or PHLPP2 is a 1323 amino acid protein, which contains 22 LRR repeats, 1 PH domain and 1 PP2C-like domain. Localized to both the nucleus and the cytoplasm, PHLPPL uses manganese as a cofactor and mediates the dephosphorylation of Akt1, thereby playing a role in cell survival and apoptotic regulation. Multiple isoforms of PHLPPL exist due to alternative splicing events.

Notable Publications

Author	Pubmed ID	Journal	Application
Hongmei Wang	31571378	Thorac Cancer	IHC
Zhao Zhou	36217445	J Hepatocell Carcinoma	WB
Xiaosong Wei	31769229	Cancer Med	WB

Storage

Storage:

Store at -20°C. Stable for one year after shipment.

Storage Buffer:

PBS with 0.02% sodium azide and 50% glycerol pH 7.3.

Aliquoting is unnecessary for -20°C storage

*** 20ul sizes contain 0.1% BSA

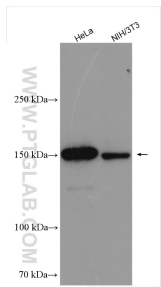
For technical support and original validation data for this product please contact:

T: 1 (888) 4PTGLAB (1-888-478-4522) (toll free in USA), or 1(312) 455-8498 (outside USA)

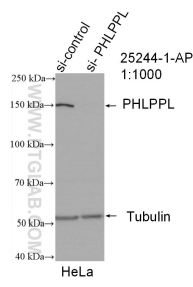
E: proteintech@ptglab.com
W: ptglab.com

This product is exclusively available under Proteintech Group brand and is not available to purchase from any other manufacturer.

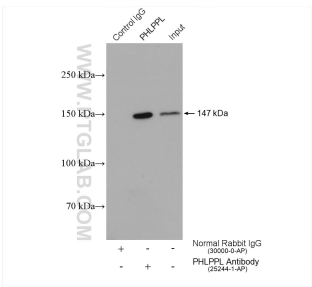
Selected Validation Data



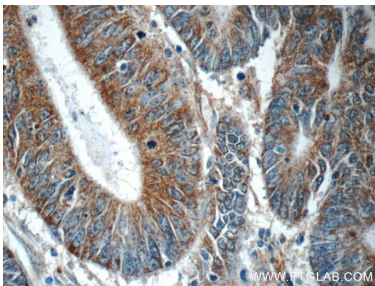
Various lysates were subjected to SDS PAGE followed by western blot with 25244-1-AP (PHLPL antibody) at dilution of 1:1000 incubated at room temperature for 1.5 hours.



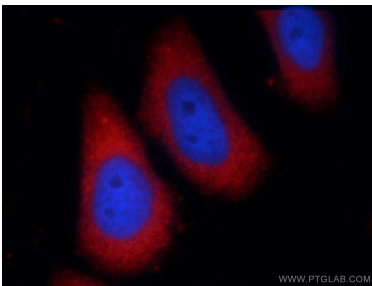
WB result of PHLPL antibody (25244-1-AP; 1:1000; incubated at room temperature for 1.5 hours) with sh-Control and sh-PHLPL transfected HeLa cells.



IP result of anti-PHLPL (IP:25244-1-AP, 4ug; Detection:25244-1-AP 1:500) with HeLa cells lysate 1880 ug.



Immunohistochemical analysis of paraffin-embedded human colon cancer tissue slide using 25244-1-AP (PHLPL Antibody) at dilution of 1:50 (under 40x lens).



Immunofluorescent analysis of HeLa cells using 25244-1-AP (PHLPL antibody) at dilution of 1:25 and Rhodamine-Goat anti-Rabbit IgG.