

For Research Use Only

# C6orf130 Polyclonal antibody

Catalog Number: 25249-1-AP

Featured Product

1 Publications



## Basic Information

Catalog Number:

25249-1-AP

Size:

150ul, Concentration: 650 ug/ml by Nanodrop;

Source:

Rabbit

Isotype:

IgG

Immunogen Catalog Number:

AG19382

GenBank Accession Number:

BC011709

GeneID (NCBI):

221443

UNIPROT ID:

Q9Y530

Full Name:

chromosome 6 open reading frame 130

Calculated MW:

152 aa, 17 kDa

Observed MW:

17 kDa

Purification Method:

Antigen affinity purification

Recommended Dilutions:

WB 1:200-1:1000

## Applications

Tested Applications:

WB, ELISA

Cited Applications:

WB

Species Specificity:

human

Cited Species:

human

Positive Controls:

WB : PC-3 cells,

## Background Information

OARD1 (O-acetyl-ADP-ribose deacetylase 1), also known as TARG1 (Terminal ADP-ribose protein glycohydrolase 1) and C6orf130, is a ADP-ribose glycohydrolase that hydrolyzes ADP-ribose and acts on different substrates, such as proteins ADP-ribosylated on glutamate and O-acetyl-ADP-D-ribose (PMID: 21849506; 23474714; 23481255). The MW of this protein is 17 kDa, and this antibody specially recognises the 17 kDa protein.

## Notable Publications

Author	Pubmed ID	Journal	Application
Joséphine Gros Lambert	37676774	Cell Rep	WB

## Storage

Storage:

Store at -20°C. Stable for one year after shipment.

Storage Buffer:

PBS with 0.02% sodium azide and 50% glycerol pH 7.3.

Aliquoting is unnecessary for -20°C storage

\*\*\* 20ul sizes contain 0.1% BSA

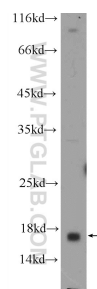
For technical support and original validation data for this product please contact:

T: 1 (888) 4PTGLAB (1-888-478-4522) (toll free in USA), or 1(312) 455-8498 (outside USA)

E: [proteintech@ptglab.com](mailto:proteintech@ptglab.com)  
W: [ptglab.com](http://ptglab.com)

This product is exclusively available under Proteintech Group brand and is not available to purchase from any other manufacturer.

## Selected Validation Data



PC-3 cells were subjected to SDS PAGE followed by western blot with 25249-1-AP (C6orf130 Antibody) at dilution of 1:300 incubated at room temperature for 1.5 hours.