

For Research Use Only

CHL1 Polyclonal antibody

Catalog Number: 25250-1-AP

Featured Product

2 Publications



Basic Information

Catalog Number: 25250-1-AP	GenBank Accession Number: BC104918	Purification Method: Antigen affinity purification
Size: 150ul , Concentration: 450 µg/ml by Nanodrop and 320 µg/ml by Bradford method using BSA as the standard;	GeneID (NCBI): 10752	Recommended Dilutions: WB 1:500-1:1000
Source: Rabbit	Full Name: cell adhesion molecule with homology to L1CAM (close homolog of L1)	
Isotype: IgG	Calculated MW: 1208 aa, 135 kDa	
Immunogen Catalog Number: AG19263	Observed MW: 135 kDa	

Applications

Tested Applications: WB,ELISA	Positive Controls: WB : mouse brain tissue, COS-7 cells
Cited Applications: WB	
Species Specificity: human, mouse, monkey	
Cited Species: human, mouse	

Background Information

Notable Publications

Author	Pubmed ID	Journal	Application
Xiangdao Cai	32863924	Oncol Lett	WB
Sabrina Simoes	33239387	Sci Transl Med	WB

Storage

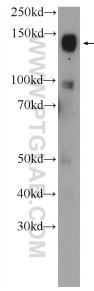
Storage:
Store at -20°C. Stable for one year after shipment.
Storage Buffer:
PBS with 0.02% sodium azide and 50% glycerol pH 7.3.
Aliquoting is unnecessary for -20°C storage

*** 20ul sizes contain 0.1% BSA

For technical support and original validation data for this product please contact:
T: 1 (888) 4PTGLAB (1-888-478-4522) (toll free in USA), or 1(312) 455-8498 (outside USA)
E: proteintech@ptglab.com
W: ptglab.com

This product is exclusively available under Proteintech Group brand and is not available to purchase from any other manufacturer.

Selected Validation Data



mouse brain tissue were subjected to SDS PAGE followed by western blot with 25250-1-AP (CHL1 Antibody) at dilution of 1:600 incubated at room temperature for 1.5 hours.