

For Research Use Only

GUCY2F Polyclonal antibody

Catalog Number: 25252-1-AP

2 Publications



Basic Information

Catalog Number: 25252-1-AP	GenBank Accession Number: BC156674	Purification Method: Antigen affinity purification
Size: 150ul , Concentration: 550 ug/ml by Nanodrop and 347 ug/ml by Bradford method using BSA as the standard;	GeneID (NCBI): 2986	Recommended Dilutions: WB 1:500-1:1000 IHC 1:20-1:200
Source: Rabbit	UNIPROT ID: P51841	
Isotype: IgG	Full Name: guanylate cyclase 2F, retinal	
Immunogen Catalog Number: AG19266	Calculated MW: 1108 aa, 125 kDa	
	Observed MW: 125 kDa	

Applications

Tested Applications: WB, IHC, ELISA	Positive Controls: WB : mouse heart tissue, IHC : human heart tissue,
Cited Applications: IF	
Species Specificity: human, mouse	
Cited Species: human, mouse	
Note-IHC: suggested antigen retrieval with TE buffer pH 9.0; (*) Alternatively, antigen retrieval may be performed with citrate buffer pH 6.0	

Background Information

GUCY2F(Guanylate cyclase 2F, retinal) is also named as GUC2F, RETGC2 and belongs to the adenylyl cyclase class-4/guanylyl cyclase family. GUCY2F may play a specific functional role in the rods and/or cones of photoreceptors. It may be the enzyme involved in the resynthesis of cGMP required for recovery of the dark state after phototransduction. By in situ hybridization, mRNA encoding GUCY2F is found only in the outer nuclear layer and inner segments of photoreceptor cells. By using synthetic peptide antiserum specific for each RetGC subtype, RetGC-2(GUCY2F) can be distinguished from RetGC-1 as a slightly smaller protein in immunoblots of bovine rod outer segments.(PMID:777544).

Notable Publications

Author	Pubmed ID	Journal	Application
Suguru Yamasaki	35024589	iScience	IF
Dan Li	39007834	Transl Vis Sci Technol	IF

Storage

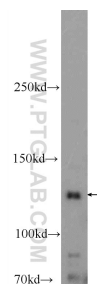
Storage:
Store at -20°C. Stable for one year after shipment.
Storage Buffer:
PBS with 0.02% sodium azide and 50% glycerol pH 7.3.
Aliquoting is unnecessary for -20°C storage

*** 20ul sizes contain 0.1% BSA

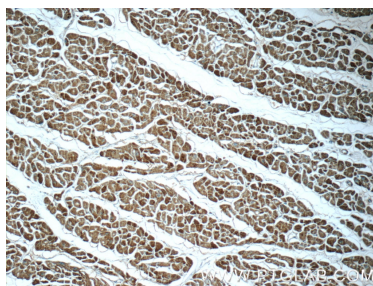
For technical support and original validation data for this product please contact:
T: 1 (888) 4PTGLAB (1-888-478-4522) (toll free in USA), or 1(312) 455-8498 (outside USA)
E: proteintech@ptglab.com
W: ptglab.com

This product is exclusively available under Proteintech Group brand and is not available to purchase from any other manufacturer.

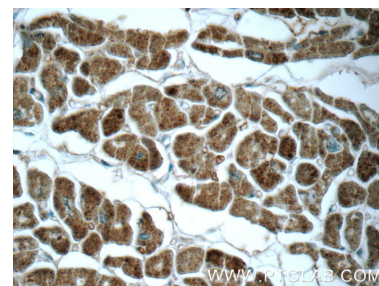
Selected Validation Data



mouse heart tissue were subjected to SDS PAGE followed by western blot with 25252-1-AP (GUCY2F Antibody) at dilution of 1:600 incubated at room temperature for 1.5 hours.



Immunohistochemical analysis of paraffin-embedded human heart tissue slide using 25252-1-AP (GUCY2F Antibody) at dilution of 1:50 (under 10x lens).



Immunohistochemical analysis of paraffin-embedded human heart tissue slide using 25252-1-AP (GUCY2F Antibody) at dilution of 1:50 (under 40x lens).