

For Research Use Only

# DUPD1 / DUSP27 Polyclonal antibody



Catalog Number: 25259-1-AP

## Basic Information

<b>Catalog Number:</b> 25259-1-AP	<b>GenBank Accession Number:</b> BC137322	<b>Purification Method:</b> Antigen affinity purification
<b>Size:</b> 150ul , Concentration: 500 µg/ml by Nanodrop;	<b>GeneID (NCBI):</b> 338599	<b>Recommended Dilutions:</b> WB 1:500-1:2000
<b>Source:</b> Rabbit	<b>Full Name:</b> dual specificity phosphatase and pro isomerase domain containing 1	
<b>Isotype:</b> IgG	<b>Calculated MW:</b> 220 aa, 25 kDa	
<b>Immunogen Catalog Number:</b> AG19658	<b>Observed MW:</b> 27 kDa	

## Applications

<b>Tested Applications:</b> WB, ELISA	<b>Positive Controls:</b> WB : mouse skeletal muscle tissue, rat skeletal muscle tissue
<b>Species Specificity:</b> human, mouse , rat	

## Background Information

Dupd1 also named as Dusp27, has been categorized as an atypical dual-specificity phosphatase (Dusp) capable of dephosphorylating both tyrosine and serine/threonine residues. It's involved in the modulation of intracellular signaling cascades. In skeletal muscle Dupd1 regulates systemic glucose homeostasis by activating AMPK, which is an energy sensor protein kinase. Dupd1 also affects MAP kinase signaling through modulation of the MAPK1/2 cascade in skeletal muscle promoting muscle cell differentiation, development and atrophy.

## Storage

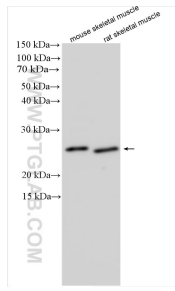
**Storage:**  
Store at -20°C. Stable for one year after shipment.  
**Storage Buffer:**  
PBS with 0.02% sodium azide and 50% glycerol pH 7.3.  
Aliquoting is unnecessary for -20°C storage

\*\*\* 20ul sizes contain 0.1% BSA

For technical support and original validation data for this product please contact:  
T: 1 (888) 4PTGLAB (1-888-478-4522) (toll free in USA), or 1(312) 455-8498 (outside USA) E: proteintech@ptglab.com W: ptglab.com

This product is exclusively available under Proteintech Group brand and is not available to purchase from any other manufacturer.

## Selected Validation Data



Various lysates were subjected to SDS PAGE followed by western blot with 25259-1-AP (DUPD1 antibody) at dilution of 1:1000 incubated at room temperature for 1.5 hours.